

ANAHEIM JUDGE VISITS CONGRESSMAN UTT



Congressman James R. Utt of Santa Ana has visitors from home. Judge John Shaw, of Anaheim, Judge of the Superior Court, Orange County (left) with his daughter Kathleen and his wife are shown on the steps of the House Office Building with the Congressman, in Washington. The Judge and his family are on a vacation trip through the East.

SERVICES & SUPPLIES

Specialists in their Line

As Close as Your Phone

A Call Will Bring Them to Your Door OR ARRANGE AN APPOINTMENT

BOATS Gilbert's

1102 So. Spadra, Fullerton, Ph. LA 5-8472
EVINRUDE MOTORS — WIZARD BOATS
MARINE HARDWARE — BOAT TRAILERS
Glass, Fabric, Resin & Paints. We Finance & Trade

BRAKES Anaheim Brake Service

RELINED—12.95—Ford, Chevrolet, Plymouth
930 N. Los Angeles St. — KE 5-1514
FREE PICK-UP AND DELIVERY

CLEANING Biel

LAUNDRY SERVICE
Cotton Dresses and Knitted
Garments our Specialty
Pick-Up and Delivery
SANATONE
414 E. Center — ANAHEIM — KE 5-5477

DRAPERIES CUSTOM & DO-IT-YOURSELF

BEAUTIFUL
by
Lynn Page
245 W. CENTER ST. — ANAHEIM — KE 5-0842

ELECTRICAL ARNOLD E. HOWARD

130 S. Lemon St. — Anaheim, Calif. — KE 5-2239
SUPPLIES — G.E. LAMPS — SMALL APPLIANCES
IRONS — TOASTERS — ETC. SALES & SERVICE
QUALITY LIGHTING FIXTURES

FENCES ALLIED FENCE & SUPPLIES, INC.

Install a Lifetime CHAIN LINK FENCE
FOR REAL BEAUTY AND PROTECTION
INDUSTRIAL AND RESIDENTIAL
FOR FREE ESTIMATE — FHA TERMS
1024 S. SPADRA RD. — FULLERTON
LAMBERT 5-3427 RES. TOPAZ 9-8087

NURSERY LEE'S

For Easy Shopping
LANDSCAPING
Gift-O-Rama — Open Daily 8 to 8 — Sundays 9 to 5
BLUE & GOLD STAMPS
2009 E. CENTER ST. — KE 5-6431

RADIATOR SERVICE HARRISON DISTRIBUTOR

REPAIRING — ONE DAY SERVICE — REBORING
Work Guaranteed — New & Rebuilt Radiators for Sale
PAUL'S RADIATOR REPAIR
301 S. Los Angeles St. — Anaheim — KE 5-5667

TIRES OK RUBBER WELDERS

(Phelps) RECAPPING GUARANTEED
TIRE TRUING & BALANCING
WHOLESALE & RETAIL
916 N. Los Angeles — KE 5-5365

T.V. & RADIO SALES & SERVICE

ON ALL MAKES
H. R. FOX & Co.
411 E. CENTER ST. — ANAHEIM — KE 5-4686

WHEEL ALIGNING AND SHIPKEY AND EXPERT

Guaranteed Precision Work by Expert Technician
SHIPKEY and EXPERT
Goodyear Tires
430 W. CENTER — ANAHEIM — KE 5-1167 — KE 5-1168
We Give 50% Green Stamps



HOW TO GO CAMPING
LOOKING FOR A DIFFERENT WAY TO SPEND YOUR VACATION? WHY NOT GO CAMPING? 120 MILLION AMERICANS HAVE DONE IT IN THE LAST 10 YEARS... AND FOUND IT FUN.

CAMPING IS RESPONSIBLE. YOU CAN BEIN SURE EQUIPMENT. ITS ALSO RESPONSIBLE AND DELICIOUS. AMERICAN AND STATE PARKS AND FORESTS OFFER MANY HOME-LIKE COMFORTS. READY-MADE PREPARED, TOILET, SINKS, THAT GIVE PLUMBING FACILITIES, SAFETY, WATER, SHELTER AND DELICIOUS OF WOOD.

MAKE CAMP LIFE SIMPLE AND COMFORTABLE BY TAKING ALONG SUCH USEFUL ITEMS AS: A FIRST-AID KIT, COOKING, A FLASHLIGHT, A ROLL OF ALUMINUM, FOR WRAPPING FOOD AND COOKING IT OVER HOT COALS... AND A GUN, AND HIDEOUT FOR A HUNDED AND ONE OUTDOOR USES.

RODOLFO RIVERA IS SERVING WITH 3RD BATTALION

Serving with the 3rd Battalion, at Kaneohe Bay, T. H., 4th Marine Regiment at the U. S. Marine Corps Air Station here is Pfc. Rodolfo Rivera, son of Mr. and Mrs. Alfred Ramirez of 1982 Santa Gertrudes St., Anaheim, California.

The Battalion is currently supervising the two weeks training of members of Hawaii's Marine reserves. The training will be climaxed by a formal parade and review after which the reserves will return to inactive duty.

LEGAL NOTICES

(Pub. Anaheim Gazette July 14, 21, 28, and August 4, 1955)

CERTIFICATE OF BUSINESS FICTITIOUS FIRM NAME

The undersigned do hereby certify that they are conducting a real estate subdivision business at 553 Wilshire Boulevard, Los Angeles 45, California, under the fictitious firm name of THE FULLERTON HOUSE and that said firm is composed of the following partners, whose names in full and places of residence are as follows, to-wit:

- Whittier Downes, Inc. 633 Wilshire Boulevard, Los Angeles 45, California
- Fallon Building Co. 553 Wilshire Boulevard, Los Angeles 45, California
- Fulton Building Co. 553 Wilshire Boulevard, Los Angeles 45, California
- Fenton Building Co. 633 Wilshire Boulevard, Los Angeles 45, California
- Milton Gersten 553 Wilshire Boulevard, Los Angeles 45, California
- Whittier Downes, Inc. 633 Wilshire Boulevard, Los Angeles 45, California
- By: Albert Gersten, President
- (Corp. Seal) FULLER BUILDING CO. By: Albert Gersten, President
- (Corp. Seal) FALLON BUILDING CO. By: Albert Gersten, President
- (Corp. Seal) FENTON BUILDING CO. By: Albert Gersten, President
- (Corp. Seal) MILTON GERSTEN.

STATE OF CALIFORNIA
County of Los Angeles, ss.

On this 23rd day of June, 1955, before me, the undersigned, a Notary Public in and for said County and State, residing therein, duly commissioned and sworn, personally appeared Albert Gersten, known to me to be the President of Whittier Downes, Inc., Fulton Building Co., Fallon Building Co., Fenton Building Co., and Milton Gersten, known to me to be the partners who executed the within instrument, known to me to be the persons who executed the within instrument, and acknowledged to me that they executed the same.

In Witness Whereof, I have hereunto set my hand and affixed my official seal the day and year in this certificate first above written.

(SEAL) LUCILE M. MANIRE
Notary Public in and for said County and State.

STATE OF CALIFORNIA
County of Los Angeles, ss.

On this 23rd day of June, 1955, before me, the undersigned, a Notary Public in and for said County and State, residing therein, duly commissioned and sworn, personally appeared Milton Gersten, known to me to be the person whose name is subscribed to the within instrument, and acknowledged to me that he executed the same.

In Witness Whereof, I have hereunto set my hand and affixed my official seal the day and year in this certificate first above written.

(SEAL) LUCILE M. MANIRE
Notary Public in and for said County and State.

Thompson, Steinberg & Shearer
Attorneys at Law
330 Wilshire Blvd.
Los Angeles 45, Calif.

K. P. Lodge Moves Back to Anaheim

A large number of Orange County and southern California Pythians turned out to welcome the Knights of Pythias back home to Anaheim, recently.

Royce Lodge has moved to Anaheim and resumed meetings on July 12, at the Odd Fellows' Hall. Regular meetings will be held on the second and fourth Wednesdays.

The lodge was named in honor of Jules O. Royce, who will be well remembered by Anaheim old-timers.

Warren Lewis and Chas. K. Eaton are Chancellor and Commander acting Secretary, respectively, of the local lodge and announce that a cordial invitation is extended to all Pythians and former Pythians living in this vicinity.

SC Baseball Team Leaves for Orient

Coach Rod DeDeaux announced a 30-player University of Southern California baseball squad that will leave for the Far East this week-end to play service teams and University teams in Japan and Korea.

The Trojan team, CIBA and Pacific Coast Conference champions, will fly from Travis Air Force Base in Fairfield, Calif., on Friday, July 15, with their first stop being Honolulu. The trip, made at the invitation of the Commanding General of the Far East Military Command, will take about five weeks during which time the Tro-

jans will probably play 80 ball games.

The squad:

Pitchers—Vic Lapiner, Marty Zuanich, Jerry Siegart, Jack Lovrich, Tony DeCarbo, Mike Blewett, Charley Mena.

Catchers—John Garten, Tom Shollin, Frank Hall.
Infielders—Kent Hadley, Buddy Pritchard, Jim Oros, John Stevenson, Bill Faddis, Bill Miller, Outfielders—Bill Olson, Bob Gerst, Mike Hoeck, Carl Maggio.

DIVIDEND DECLARED

California Bank's board of directors has declared the regular quarterly dividend of 45 cents per share payable August 1 to shareholders of record at the close of business July 18.

A 3—ANAHEIM GAZETTE

Anaheim, Calif., Thurs. July 14, 1955



"They all laughed when I hired that long-armed girl. Best file clerk we ever had!"

CHIEF LONE EAGLE Smokes Out Answer.

WE GET TOO MANY MESSAGES
NO GOTTIME FOR HUNT



ME CHECKUM YELLOW PAGES GET HEAP QUICK HELP I WANT



FOR TELEPHONE ANSWERING SERVICE IT PAYS TO LOOK IN THE 'CLASSIFIED' PART OF YOUR TELEPHONE BOOK



Used by 9 out of 10 people as a guide to those who sell or serve Pacific Telephone



No wonder this great '55 Pontiac is setting all-time sales records!

It's bigger, smarter and more powerful than any other car at anything like the price!

A sales success like Pontiac's starts on the drawing boards—with engineers and designers who have been schooled for years in the Pontiac idea of giving more people more car for less money.

Take the matter of size. With its long 122" or 124" wheelbase and extra, big-car heft, Pontiac provides road-hugging comfort and a safe, secure feeling you get in no other car near it in price!

Now take this big, roomy car and surround it with the unmatched distinction of Twin-Streak styling and Vogue Two-Toning—beauty that obvi-

ously is calling the turn on the future—and you have another reason for Pontiac's phenomenal sales success.

That alone would be enough for most cars—but not for Pontiac!

Pontiac corners the market on value with the most powerful engine within hundreds of dollars of its price. The sensational 200-horsepower Strato-Streak V-8 with four-barrel carburetor* is the newest, most modern power you can buy. In acceleration and in passing power you're on even terms with anything on the road. And still more in your favor is

the fact that today's Pontiac is bettering even its own enviable reputation for dependability and economy!

If by now you're thinking "This is what I've wanted all along!", we suggest you stop in and talk dollars and cents. That's when you'll get the final reason for Pontiac's record popularity—the fact that you can fit a big, powerful, future-fashioned Pontiac into any new-car budget! You'll never find it easier to get into the fine-car class than right now!

*Low extra cost option

Pontiac

CASEY - BECKHAM PONTIAC

836 S. LOS ANGELES ST.—ANAHEIM—KE 5-2857 or KE 5-2858

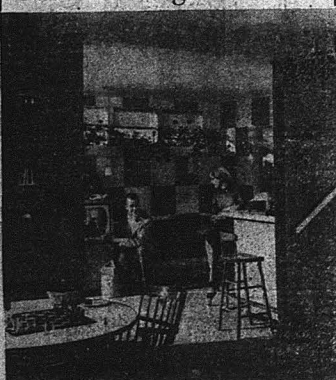
"A GOOD DEAL AND A GOOD DEAL MORE" OPEN EVS. 'TIL 10 P. M.

WE'VE SET OUR SIGHTS ON THE BIGGEST YEAR IN HISTORY! Come in and talk trading NOW!



Dee Moore, pretty young actress, unfurls the historic banner signaling the opening of the Sixth San Diego Shakespeare Festival at the Old Globe Theatre in Balboa Park, San Diego, California. The Festival will get underway July 22, and continue through September 4. Miss Moore and a company of 50 players will present "Measure For Measure," "Hamlet," and "The Taming Of The Shrew," nightly in rotation, plus colorful pre-curtain pageantry on the theatre green.

Basement High in Looks



From the least lived-in part of the house to the most lived-in is a typical transformation that takes place in a basement when it's converted into an attractive recreation room. It's a cool retreat in summer and a cozy one in winter, for chats, television, games and refreshment.

EVERY PAYMENT YOU MAKE ON A HOME LOAN



PUTS YOU CLOSER TO HOME OWNERSHIP!

IN THE PAST 34 YEARS...

We have assisted many families to become Home Owners

— on the —

"EASY PAYMENT PLAN"

We Can Help You, Too! Come In Today AND LET US TELL YOU MORE!

★ YOUR SAVINGS ACCOUNT WITH US IS INSURED UP TO \$10,000



ANAHEIM BUILDING & LOAN ASSOCIATION
Founded June 24, 1921

On the Friendly Corner — Anaheim, Calif.
Center and Lemon Sts. Phone KE 5-2158 — KE 5-2159

GM Plans Power Show



DETROIT, Mich. — FANNING A GIANT SHOW of Diesel and aircraft power are Harlow B. Curtis (left), president of General Motors, and C. E. Osborn, vice president in charge of GM's Engine Group, as they inspect a scale model of the "General Motors Powerplant." The spectacular outdoor exposition is scheduled for August 21-September 23 inclusive in a 1,000,000-square-foot site on Chicago's lakefront, adjacent to Soldier Field. In addition to stage shows and varied entertainment, Powerama will feature giant machines and other equipment produced or powered by GM's Diesel, aircraft, and heavy equipment divisions. Admission will be free.

Jacqueline Cone, James Harrison, Wed on Sunday

White stock, gladiti and dainty baby breath decorated the altar of the First Presbyterian church for the marriage of Miss Jacqueline Ann Cone, daughter of Mr. and Mrs. Everett M. Cone of 548 S. West St., Anaheim, and James Robert Harrison, nephew of Mr. and Mrs. L. M. Walker of Lake Arrowhead, last Sunday. The Rev. Roland Anderson performed the double ring ceremony. White ribbon bows marked the pews along the pathway of the bride.

The bride, given in marriage by her father, chose a gown of imported embroidered white nylon tulle over white satin in waist-length, fashioned with a very full skirt, fitted bodice and tiny jacket. Flowers were white roses and lily of the valley. Her fingertip illusion veil was held in place by a tiny sequin embroidered head piece and for a sentimental accent, she wore an antique gold chain which had been worn by her mother and grandmother at their weddings.

Candlelighters were Miss Virlee Elliott and Miss Karen Elliott, wearing nylon tulle and wristlets of pink carnations.

William Talevich was soloist with Mrs. Talevich at the console of the organ, who also played the traditional wedding marches.

Maid of honor was her sister, Miss Mary Cone. Miss Patricia Mattox and Miss Patricia Corey were bridesmaids. They were all gowned in blue nylon tulle and lace and carried blue-centered carnations.

The reception was held at the home of the bride with Mrs. Cone, mother of the bride, receiving the guests in a gown of blue silk organza with matching hat and shoes and pink roses. Mrs. Walker was in a pretty summer print and had a corsage of yellow roses.

Miss Nancy Stewart had charge of the guest book. Attending to hostess duties were Mrs. Lester De Ment, Mrs. George Gregory and Miss Gay Dixon.

The young couple left for a honeymoon in northern California and upon their return will make their home at Sky Forest.

Nearly 100 youngsters attended the annual tennis clinic on Friday, June 24, conducted by the Anaheim Park and Recreation Dept.



"Your sons are here to see you."

Jenny A. Pratt Of This City, Dies Mon.

Jennie A. Pratt, 65, a native of Chicago, Ill., who came to Anaheim more than five years ago, died Monday evening at the Orange County hospital after an extended illness. Her home was at 323 S. Philadelphia street.

She is survived by one son, Donovan E. Pratt of Fairfax Va., two step-sons, Wayne Geithman of Florida and Leonard Geithman of Michigan; one sister, Mrs. K. F. Snyder of Anaheim; four brothers, Roy, Charles and John Reynolds of Wisconsin and Theodore Reynolds of Illinois; mother, Mrs. A. M. Reynolds of San Bernardino and three grandchildren.

She held her membership in the

Presbyterian church in Beloit, Wisconsin. Funeral arrangements are incomplete and will be announced by the Hilgenfeld Mortuary.

Participates in Tactical Training

Marine Pfc William E. Mulcahy, son of Mr. and Mrs. Joseph Mulcahy of 200 W. Hill ave., Anaheim, participated in recent amphibious training exercises conducted by the 1st Marine Division's 5th Regiment off the coast of Southern California.

The regiment sailed from San Diego, June 12 with a Navy task force. After five days of training at sea, the Leathernecks made an amphibious landing near Oceanside, on the Camp Pendleton res-

ervation. Two days of tactical maneuvers followed.

The exercise was the first large-scale amphibious training conducted by the division since its

redeployment from Korea a month ago.



thrilling thoroughbred

RACING

coming this Saturday, JULY 16

\$100,000 NET GUARANTEED TO WINNER

HOLLYWOOD GOLD CUP

One of the world's greatest racing classics featuring America's finest Thoroughbreds

SAME ADMISSION PRICES

GRANDSTAND \$100 CLUBHOUSE \$200

(All Prices Plus Taxes)

SEASON ENDS JULY 25 8 RACES DAILY

Hollywood park

PRALINE AVENUE AT CENTURY BLVD. INGLEWOOD

POST TIME 1:30 Daily

ALWAYS A COOL SEA BREEZE

Finance 'em with an FHA Title I loan at...



SECURITY-FIRST NATIONAL BANK

MEMBER FEDERAL DEPOSIT INSURANCE CORPORATION

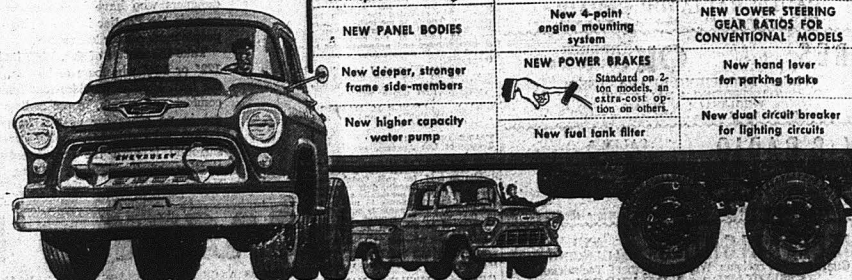
ANAHEIM BRANCH — CENTER AT LEMON (Open Fridays Until 6)

Really loaded


with great new developments

Only new Chevrolet Task-Force Trucks bring you all these truly modern features. If you don't get them in the truck you buy, you're actually getting an old fashioned truck.

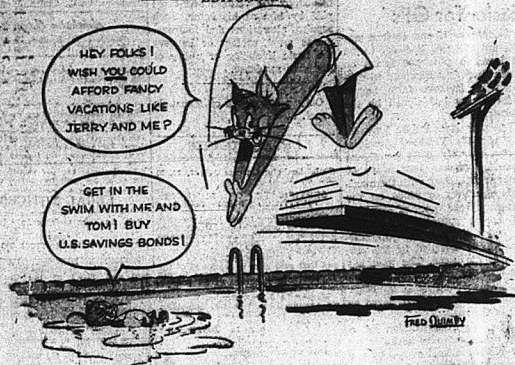
CHEVROLET NEW CHEVROLET Task-Force TRUCKS



CONE BROTHERS CHEVROLET
215 No. Los Angeles St. — Anaheim KEystone 5-2215

NEW CAMEO CARRIER MODEL A truck like no truck you've ever seen!		New more rugged standard 3-speed Synchro-Mesh transmission
New distinctive 2-tone color styling	NEW LOW-CAB FORWARD SERIES Replaces the old fashioned COB	New 7-lb. radiator pressure cap
New parallel-design frames	New 12-volt electrical system	New long-wheelbase 1/2-ton pickup model
New concealed Safety Steps Stay free of ice or mud.	New heavy-duty single-speed rear axle	New dome light switch on instrument panel
New deep-drop I-beam front axle (Forward Control)	NEW OVERDRIVE Optional on 1/2-ton models at extra cost.	New optional Full-View rear window
New Power Steering (extra-cost option offered in all models except Forward Control)	New Filte-Ride De Luxe Cabs Custom cabs at extra cost.	NEW PANORAMIC WINDSHIELD
New higher gross torque and horsepower ratings	New High-Level Ventilation System	New 160° thermostat
New wide-track front axles	New 1/2-ton Forward Control chassis	New rebound-controlled seat
New, Hatchback Drive on All Models	V8-6 2 power-packed V8 engines—5 sizes	New exterior chrome option
New greater frontal area radiators	New longer front springs	New greater wheelbase range—104 to 220 inches
New stronger alloy-steel spring center bolts	NEW HIGHER MAXIMUM G.V.W.—UP TO 18,000 LBS.	New standard 34-inch frame width
New two-speed axle control on gearshift	New shorter, more maneuverable wheelbases in most models	New smaller, turning circles for nearly all conventional models
New larger, quieter slow-speed fan	New optional Airmatic seat	NEW TUBELESS TIRES (Standard on 1/2-ton models)
NEW PANEL BODIES	New 4-point engine mounting system	New safer double-wrapped fixed eyes on front springs
New deeper, stronger frame side-members	NEW POWER BRAKES Standard on 2-ton models, an extra-cost option on others.	NEW LOWER STEERING GEAR RATIOS FOR CONVENTIONAL MODELS
New higher capacity water pump	New fuel tank filler	New hand lever for parking brake
		New dual circuit breaker for lighting circuits

EDITORIAL



ENJOY THE GREAT VACATIONS YOU'VE DREAMED OF...THROUGH THE PAYROLL SAVINGS PLAN!

A MONTH in Bermuda, a European tour, a trip around the world—what's the vacation you've always thought you couldn't afford? Whatever it is, now you can afford it, just by doing one simple, easy thing:

Join the Payroll Savings Plan. It's the best way in the world to quickly accumulate big sums of money for vacations, for education, for homes, retirement—for whatever you want.

Here's how Payroll Savings works:

You name an amount to your company's pay office—a few dollars or as much as you like. Then each week, before you get your pay, this sum is saved out. (That way you're never tempted to spend money you really want to save.) And as they're set aside, these amounts are constantly invested for you.

In United States Series E Savings Bonds. The Bonds are in your name and are turned over to you.

Because Savings Bonds earn good interest—3% when held to maturity—they're soon worth more than the money you've invested in them. And how your savings mount up! Sign for as little as \$3.75 a week and in 5 years you'll have Bonds worth over \$1,000 cash value! In 9 years, 8 months, you'll have \$2,137!



So why not start saving and investing today—in the Payroll Savings Plan? Or, if you're self-employed, invest in Bonds regularly where you bank.

HOME SAY SO.

At the time of feeding some lawn authorities recommended that the lawn be spiked and one-fourth inch of sand swept in to aerate and improve the drainage.

The first bicycle was made in Scotland in 1840.

SHOPPER—Summertime Pest Control

What is so rare as a summer's day?—to paraphrase a line from a favorite old poem a bit. And the answer is, obviously, nothing. Summertime is a season of enjoyment for everyone, gardener and non-gardener, alike. The garden is in the height of its bloom; the lawn never looked greener or more inviting and the shade beneath the trees is mighty tempting.

But wait!—suddenly on the horizon there looms the VILLAIN—those pests that time their attack for summer. Three of the most "pestiferous" pests at this time are ants, lawn moths and earwigs. And, according to the California Association of Nurserymen, one of the most effective controls for these three are chlordane products in dust and liquid form. By ridding yourself of ants in the garden, you automatically eliminate aphids for ants carry aphid eggs. If ants begin swarming into your home use chlordane in spray form and apply around the foundations of the home, along the sidewalks, steps, in areas where garbage is temporarily stored, every two to four weeks.

Lawn moths will appear at dusk flying over your lawn, scattering their eggs. The eggs hatch in a few weeks and larvae emerge and immediately begin eating the roots of the grass. Here again chlordane solution in spray form will make short work of these pests; spray every three or four weeks. As for the third of this triumvirate—earwigs—this pest

WHITTIER COLLEGE PROF. HEADED FOR ETHIOPIA

Dr. Paul L. Rice, professor of biology at Whittier College, has accepted a two-year government appointment to Africa to head a three-man team working on the survey and control of malaria in Ethiopia.

A part of the "Point Four" program of the Foreign Operations Administration, the research team will include Dr. Rice as senior entomologist, a junior entomologist, and a parasitologist. They will be stationed in Addis Ababa, capital city of Ethiopia.

Gelatin is obtained from bones of animals by chemical treatment.

you, probably won't see for he feeding on the green foliage. For functions at night-time. Spray with a chlordane preparation in dust, damp areas and along fences, for this is where he resides.

chlordane every two weeks. Other summer pests to keep an eye out for are dipterocera, weevils, leaf hoppers and red spider. DDT is an effective control for red spider.



Modern living demands more ice—and Servel Gas Ice-Maker Refrigerator

gives you all you want automatically!

Not only all the ice you want, but all the modern features you want, too. Servel, the GAS refrigerator, brings you the automatic Ice-Maker—silent Gas refrigeration—automatic defrosting and dozens of other up-to-the-minute features.

SOUTHERN COUNTIES GAS COMPANY

<p>AUTOMATIC ICE-MAKER. Ice-Circles without trays, automatically. Just ready for one or a handful. Perfect for ice desserts, drinks, chilled salads.</p>	<p>BUILT-IN SHelves. Food glides to you on extra-smooth, nylon rollers. Shelves are fully adjustable. Backshelf foods are always easy to reach.</p>	<p>AUTOMATIC DEFROST TIMER. Saves so much time it's almost invisible. Servel models have safe, "Push Button" defrosting.</p>	<p>also big, separate freezer—full-size shelves—Quick-cool shelf—Butter Keeper—16-4-door shelves</p>
---	--	---	--

Only **GAS** gives you a refrigerator different from all others



Film and TV cowboy Roy Rogers visited the Shriners' Hospital for Crippled Children to buy tickets for the July 27 Shrine Football Game and Pageant at the Los Angeles Coliseum. Happy ticket sellers are Barbara Lane and Anthony Lane, with Potentate, Gloria L. Pearce leading assistance. All proceeds of the Wednesday night pageant and game go to the Shriners' Hospital which treats crippled children at no cost and regardless of race, color or creed.



Save 10% on wood preservative...ask the Standard Man

By buying and taking delivery during June, July, or August, you can get a 10% discount on Standard Wood Preservative.

And you save a second way, because Standard Wood Preservative adds extra years of life to fences, posts, masts, boat poles and other wood that comes in contact with the ground. It protects wood against rot, termites, carpenter ants and powder post beetles. Rain or snow will not wash it out. Can be applied to brushing, soaking or spraying.

Order now...take delivery before the end of August...and save 10%.

For information on any Standard Co. Company of California product, call

AL ROHRS and SON

1016 Santiago St. — Santa Ana — Kimberly 7-4423



Number nine in a series: ACHIEVEMENT AWARDS

Statewide?

...SURE, BUT LOCAL TOO!

Here's another way we serve Orange County...

Last year our bank distributed \$17,600 to high school students in its Southern California Achievement Awards Program. Cash awards, certificates and engraved trophy cups were presented to a number of outstanding students attending high schools in Orange County. We believe this program benefits everyone in the Orange County area by encouraging high scholastic standards, good citizenship and individual achievement among its future citizens. It is another way in which Bank of America serves Orange County.

Bank of America

NATIONAL TRUST AND SAVINGS ASSOCIATION
MEMBER FEDERAL DEPOSIT INSURANCE CORPORATION

BANKING THAT IS BUILDING CALIFORNIA...banking that is building Orange County

- | | | | |
|---|--|---|--|
| ANAHEIM BRANCH
150 East Center Street
O. E. Hanson, Mgr. | BALBOA BRANCH
635 East Balboa Boulevard
H. M. Holker, Mgr. | FULLERTON BRANCH
Amalgam and Spades
H. N. Warren, Mgr. | LAGUNA BEACH BRANCH
290 Coast Boulevard South
A. L. Combs, Mgr. |
| LA HABRA BRANCH
500 West Central Avenue
E. H. Larson, Mgr. | NEWPORT BEACH BRANCH
2444 Via Lido
Roland A. Wright, Mgr. | ORANGE BRANCH
307 North Glassell Street
O. T. Johnson, Jr., Mgr. | PLACENTIA BRANCH
What Santa Fe Avenue
E. M. Everett, Mgr. |
| SAN CLEMENTE BRANCH
101 South El Camino Real
L. A. Winterton, Mgr. | SANTA ANA BRANCH
80 North Main Street
R. B. Wright, V. Pres. & Mgr. | YORBA LINDA BRANCH
4302 South Main Street
Frank J. Jones, Mgr. | |

IN THE DAYS OF LONG AGO

75 Years Ago . . .
July 1888

About 8 o'clock on Thursday evening, Mr. Chas. Wagner left town for his home about four miles distant. He was driving his two-horse team, the wagon being heavily loaded with bricks, a bale of tobacco and sundry small articles. Yesterday morning his dead body was found in the road midway between the Meyersdale and Colton places. The body was at once removed to the town residence of J. K. Tuffree. A coroner's jury was summoned, and after listening to the testimony of Fredrick Hetcher, Herman Meyer, Jacob Walker and Edward Newman who found the body, Dr. Geo. H. Bailey, who made a post mortem examination of the body, and the testimony of the coroner, the jury returned a verdict that there was no evidence of foul play, and death was purely accidental. Wagner had evidently fallen from his seat, the wagon wheels passing over him. The horses and wagon were found a few hundred yards distant where the horses had patiently stood through the long night. Mr. Wagner was held in the highest esteem by all and his untimely death has cast a gloom over the whole town. He leaves a widow and four children.

H. F. Porter of San Fernando has an 80-acre field of Odessa wheat. He told a Los Angeles Express reporter that it was in better form than Sonora wheat planted at the same time. He confesses to one mistake in sowing it—he used 25 lbs. of wheat seed to the acre altogether too much, as 45 lbs. of seed of other varieties is the average amount sowed to the acre, the difference in favor of Odessa is very noticeable.

From the Files of
The Anaheim Gazette
by MRS. HENRY KUCHEL

The Board of town trustees met in regular session on Wednesday. The ordinance committee was instructed to prepare an ordinance fixing water rates, an amendment to Ordinance No. 12 was adopted relating to digging of ditches across any street, highway or common of the town of Anaheim. Such ditch shall be so made that it will present no obstruction to travelers on said streets, highways, may make such ditch must, after or common, and any person who using same, immediately fill it up to the level of the street. For any violation of this section, those found guilty shall be fined a sum not exceeding five dollars for each and every offense.

The amendment of the dog ordinance, which provided for the exemption of all dogs kept fastened upon the premises of the owner, was rejected. The Marshal, therefore, must enforce the dog ordinance, which provides that a tax of two dollars be levied upon every dog owned or kept in Anaheim. The Board adjourned to meet as a Board of Equalization on July 27, 28 and 29 between the hours of 4 p.m. and 5 p.m.

B. F. Selbert returned on Tuesday from Globe, A. T., where he has been visiting. Work is very plentiful in that section of the territory and there are no idlers except those who prefer to remain so.

The following are the newly-elected officers of Orpheus Lodge I.O.O.F.—H. A. Boege, N.G.; M.

Geisinger, V.G.; Richard Menzel, R.S.; D. Strodthoff, treasurer.

The population of Anaheim township in 1945, and the population of the town of Anaheim is 113.

50 Years Ago . . .
July 1905

The city trustees on Tuesday evening passed resolutions of intention covering construction of cement sidewalks and curbs on the following streets: Olive street, east side from Adella to Broadway; Olive street, west side from Broadway to Santa Ana; Los Angeles street, west side from Chestnut to Santa Ana; Center street, both sides, from Palm to Citron.

In the absence of Mayor Rust, Trustee Fletcher was called upon to preside. There were present trustees Fletcher, Schwenker, Berdrow, Absent, Rust and Darling.

Max Nebeling reports the loss of a valuable Gordon setter dog following one day last week. The dog followed him down town and on returning home died suddenly. Mr. Nebeling valued the dog at \$25.

L. Nemetz has made substantial improvements to his building on the corner of Emily and Center streets. New flooring has been laid and a new exterior finish, including painting added, improving the appearance of the building materially. Henry Albrecht did the carpenter work. Frank Nemetz will occupy the premises with an auction emporium.

Yesterday the weather continued foggy, the sun having been obscured continuously since Sunday. Oldest inhabitants said it was the first time in their recollection that such dense overhead fog continued for such a length of time at this season of the year.

D. Bastanchury is installing a pumping plant on his ranch north of here. The plant will be one of the largest in the valley and the water will be used to irrigate this 5000 acre tract.

Stockholders of the Union Brewing Company met on last Thursday and selected the following officers to serve for the ensuing year: Anton Hessel, president; C. D. Rust, vice president; John Bauer, secretary; B. Dauser and L. Z. Zimmerman of Los Angeles were elected directors to act in conjunction with the president, vice-president and secretary. The year has been prosperous for the company and not a share of stock is to be had.

The George H. Hunter ranch situated south of town and owned by Mrs. Pearson is reported exchanged for Long Beach property, at a consideration of \$16,500. The ranch contains 35 acres and is set to oranges and walnuts. The place changed hands a year ago at \$15,000.

Hans Weisel is in town again after a brief absence. Hans' popularity with the girls increases and he looks a winner.

The Snyder place on Garden Grove road south, owned by A. D. Lear, was sold this week for \$12,000. The place contains 50 acres, most of it improved. The Berdrow place consisting of 20 acres at the corner of Citron and South streets was sold this week to James Grobuech, a recent arrival from the east. Consideration \$7,500.

The Orange Union High school district, comprising the school district of Orange, Olive, El Modena and Villa Park has completed the erection of a \$32,000 school building at Orange, one of the finest in the county.

City Clerk Merritt is engaged in writing up the city assessment roll. He has not yet figured up the city's total assessed valuation.

Frank Steadman and Miss Ida Berlitz were members of Sunday's excursion to Catalina.

Mrs. Josephine Butler of St. James Park, Los Angeles, is visiting here, the guest of Mrs. Ernest Browning.

The congregation of White Temple Methodist church met for the last time in the old sanctuary on Sunday, June 26. They will most beneficently in the Fellowship Hall during the \$70,000 remodeling of the sanctuary, the last step in a three-fold building program. Seating capacity will be increased from 800 to 585.

Storage Space Galore In This...

"L-BOW ROOM" KITCHEN



A world of storage facilities is provided in this L-shape steel kitchen, one of the more popular plans being utilized in smart space-saving rooms. By arranging built-in appliances and gleaming color-flocked steel wall and base cabinets along two adjacent walls, sufficient floor space is left to accommodate a handsome peninsula cabinet with additional storage drawers and shelves. A variety of interior conveniences, such as this vegetable bin with sliding trays (inset) are obtainable in today's up-to-date steel units, giving maximum storage in compact areas.

Farm Purchase Easier for GI's

World War II and Korean war veterans will find it easier to get GI loans to purchase farms on which there is a home or to construct or improve farm houses under a new law signed by the President.

The new law, Public Law 84, increases the Veterans Administration guaranty of GI farm loans made by private lenders to 60 per cent of the loan with the maximum guaranty of \$7500 on the following three types of loans.

1. For the purchase of a farm on which there is a farm residence to be occupied by the veteran as his home. The guaranty would cover not only the farm and residence but also all other buildings which are considered a part of the realty.
2. For the construction of a farm residence to be occupied by the veteran on land owned by the veteran. In the case of a veteran who wants to build a residence on his farm on which there is an indebtedness secured by a lien against the land, the GI loan with the increased guaranty can be used to liquidate that lien if the indebtedness does not exceed the reasonable value of the land.
3. For the repair, alteration or

improvement of a farm residence owned by the veteran and occupied by him as his home. Such repairs, alterations and improvements must protect or improve the basic livability or utility of the farm residence.

Only a few types of mammals sweat.

LEGAL NOTICES

(Pub. Anaheim Gazette July 7, 14, 21 and 28, 1955.)

CERTIFICATE OF BUSINESS FICTITIOUS FIRM NAME

The undersigned does hereby certify that he is conducting a Hotel Shop and that said firm is composed of the following person, whose name or full name and place of residence is as follows: Barney L. Bayserman, 4215 Victoria Avenue, Los Angeles 4, California. Witness my hand, this 1st day of July, 1955. Barney L. Bayserman

STATE OF CALIFORNIA, County of Los Angeles, ss.

On this 1st day of July, A. D. 1955, before me, THOMAS JENKINS, a Notary Public in and for said County and State, residing therein, duly commissioned and sworn, personally appeared Barney L. Bayserman known to me to be the person whose name is subscribed to the within instrument, and acknowledged to me that he executed the same.

In witness whereof I have hereunto set my hand and affixed my official seal the day and year in this certificate first above written. Thomas Jenkins, Notary Public in and for said County and State.

A-6-ANAHEIM GAZETTE

Published Thursday of each week at 93 East Center Street, Anaheim, California.

Entered as second class mail matter under the Act of March 3, 1879.

The Gazette is a member of the National Editorial Association and California Newspaper Publishers Association. All rights herein are reserved. Subscriptions: 50c per month by carrier or \$3 per year by carrier or mail.

LEGAL NOTICES

(Pub. Anaheim Gazette July 14, 1955)

NOTICE OF INTENTION TO SELL

NOTICE IS HEREBY GIVEN pursuant to the provisions of Sections 2440 and 2441 of the Civil Code of the State of California, that JOHN M. LARSON, Vendor, of 1819, E. STYAMORE Street, ANAHEIM, California, intends to sell to HERBERT B. HOLVE, Vendee, of 1819, E. STYAMORE Street, ANAHEIM, California, all that certain personal property consisting generally of all stock, in trade, fixtures, equipment and pool bill, certain REFRIGERATOR, certain DOG STATION, BUSINESS CAR, and SERVICE located at 1819, E. STYAMORE Street, in the City of ANAHEIM, California, and that the purchase price thereof will be paid at 10 o'clock on the 1st day of JULY, 1955, at THOMAS ELLISON SCROWES, 1711 ATLANTIC AVE., LONG BEACH, County of Los Angeles, State of California.

Dated JULY 7, 1955. JOHN M. LARSON, Vendor. THOMAS ELLISON SCROWES, 1711 ATLANTIC AVE., LONG BEACH, CALIF. Escrow No. 1512.

WHAT'S DOING

H. I. Perry, your Telephone Manager in Anaheim

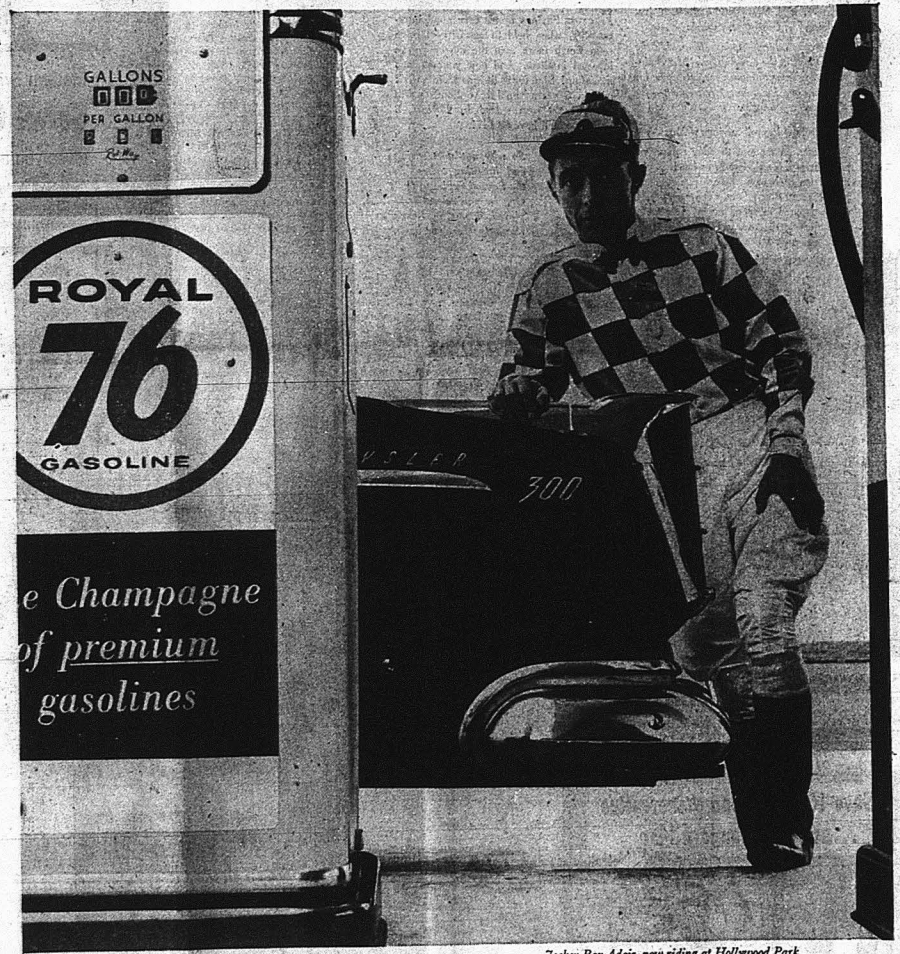


Telephones ... in NEVER NEVER LAND

EVERYONE'S TALKING ABOUT IT—that's right, it's Disneyland in Anaheim. Your local telephone office is accepting requests for telephone service from the New Residents of this fantastic community. Among the many businesses to operate there are these few whose names read just like a fairy tale: "The Red Wagon Inn," "Chicken of the Sea Pirate Shop," "Merlin's Magic Shop" and "Swift's Chicken Plantation." You can even cash your check there—for the Bank of America is opening the "Disneyland Branch." It'll be interesting to see these imaginative names listed in your next telephone directory.

How telephone drivers guard your safety

Protecting your safety and that of your family is a big part of every telephone driver's job. And to prepare our drivers for this responsibility, we give each a special course in what we call defensive driving. This teaches telephone people to drive in such a way as to prevent accidents no matter what others may do. And it really pays off. For example, telephone drivers covered more than 80 million miles last year without a single fatal accident. Naturally, careful driving like this helps make the streets safer for everyone. And by helping us keep skilled people on the job, it enables us to work faster and more efficiently... to bring you good telephone service. Pacific Telephone works to make your telephone a bigger value every day.



Jockey Ray Adair, now riding at Hollywood Park

YOU DON'T NEED 300 HORSES under the hood to appreciate new Royal 76 Gasoline. (But isn't it good to know the West's most powerful premium was made for that kind of assignment?) No matter what car you drive, new Royal 76 gives you full-power response on the open highway and glass-smooth idling in congested city traffic. New Royal 76 Gasoline, you see, is specially blended to bring you *both*. At the sign of the big 76, where—*You know you always get the finest from Union.*

UNION OIL COMPANY OF CALIFORNIA

Free Scenic Postcards at your Union Oil Station now



for the
BALANCE of JULY...

Anaheim Gazette

ANAHEIM, ORANGE COUNTY, CALIFORNIA

THURSDAY, JULY 14, 1955

**Casey
Beckham**

**Will Really Make It WORTHWHILE
for you to
BUY a PONTIAC
... in Anaheim**

WE'RE OUT TO BEAT OUR GREATEST SALES
RECORD THIS MONTH...AND THE SKY IS THE
LIMIT ON WHAT WE WILL OFFER TO DO IT!

BUY NOW...
while you can

SAVE \$388

on a beautiful, new 860 1955 V8 Pontiac 2-dr. Sedan!

BUY NOW...
while you can

SAVE \$688

on a new 1955 V8 Catalina Hardtop --incl. Hydramatic!

BUY NOW...
while you can get as much as

\$300 MORE

THAN MARKET VALUE FOR YOUR TRADE-IN!



★
YOUR PRESENT
CAR
Will Probably
Make The
DOWN PAYMENT
on
Casey-Beckham's
LIBERAL
TRADE-IN
APPRAISALS
★



★
OPEN
DAILY
TIL 10 P.M.
★

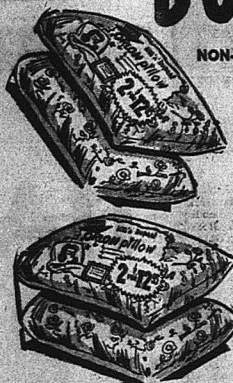
YOU'LL ALWAYS BE GLAD THAT YOU BOUGHT A PONTIAC!
LET CASEY-BECKHAM PONTIAC'S RECORD SALES BE YOUR GUIDE TO THE BUY OF THE YEAR!
Don't take our word for it... COME IN TODAY and SEE FOR YOURSELF AT...

CASEY-BECKHAM PONTIAC

SALES
and
SERVICE

in ANAHEIM at 336 S. Los Angeles St. — Phones KEystone 5-2857 and KEystone 5-2858
ALWAYS "A GOOD DEAL and A GOOD DEAL MORE"

ANOTHER... BOB'S EXCLUSIVE OFFER!



NON-ALLERGIC — MOTHPROOF — MILDEW PROOF
WASHABLE — DUSTLESS — EXTRA PLUMP
SOFT AND LIGHT AS A CLOUD!

Imperial - \$12.95 Value - 100%

Orlon PILLOWS
SET OF 2 \$3.99
PILLOWS FOR

OFFER GOOD WITH ANY \$5.00 PURCHASE



COFFEE
M.J.B. ALL GRINDS

A Blend Of
The World's
Fine Coffee...
Take Advantage
Of This Low Price

79¢ LB.



"GLENCOE"
1st QUALITY

OLEO

ONLY
AT BOB'S

3 LBS. FOR 49¢

MAYONNAISE

Made With Whole Eggs
"BEST FOODS" **pt. 33¢**

RINSO BLUE

LEVER BROS. NEW BLUE
DETERGENT — IT'S TERRIFIC

TUNA

THE IDEAL QUICK LUNCH!

"VAN CAMP'S"
CHUNK REG. CAN

4 CANS FOR 89¢

N.B.C. Peanut chip
Cookies 13 1/2 oz. **29¢**

"Libby's" - 12 oz.
Corned Beef **45¢**

Aemr. - Pimento - Olive - Etc.
Kraft's - 5 oz. Jar
Jar Cheese **23¢**

"Libby's" - 12 oz.
Roast Beef **49¢**

BLUE CHEER	Giant Box 69¢
IVORY BAR Small 4 for 21¢	Med. 3 for 23¢
IVORYFLAKES Large 29¢	DREFT Large 29¢
IVORY SNOW Large 29¢	GIANT DREFT 69¢
DUZ Large 29¢	JOY Large 29¢
GIANT DUZ Large 69¢	GIANT JOY 69¢
CAMAY Reg. 3 for 25¢	Bath 2 for 25¢
LAVA Reg. 2 for 23¢	Bath 2 for 31¢

FROZEN FOODS

CHICKEN POT PIES "Kermin's"

ALL BEEF PIES "Kermin's"

5 INDIVIDUAL PIES FOR 1.00

ORANGE JUICE "M.C.P."

LEMONADE "M.C.P."

LIMEADE "M.C.P."

9 CANS FOR 1.00 6 OZ CANS

406 E. CENTER ST. ANAHEIM
6001 GRAND AVE. BUENA PARK
11605 CARMENITA RD. SOUTH WHITTIER

We Reserve The Right To Limit Quantities
No Sale To Dealers

HOURS. Sun., Mon., Tues. 9 a.m. to 8 p.m.
Wed., Thurs., Sat., 'Til 9 p.m. - Fri. 'Til 10 p.m.

Prices Effective Thurs. Thru Sun. July 14-17

BOB'S BABY BEEF U. S. GOOD . . . BEST CENTER CUTS

You'll Find Thick or Thin Cuts, Carefully Trimmed in Bob's
Own Style To Give You More Meat For Your Money . . .

ROUND STEAK

ACTUAL Photograph of BOB'S BABY BEEF ROUND STEAK

Don't Miss This Buy!



Best Cuts — Well Trimmed
Bob's Baby Beef U.S. Good
RUMP ROASTS 59¢

Manhattan All Meat 14 oz.
SLICED SALAMI 39¢

ANOTHER SHIPMENT FROM WATERLOO, IOWA!

King's Piedmont
SLICED BACON 39¢

Bob's Baby Beef — U.S. Good — All
Bone & Excess Fat Removed
Sirloin Tip Roasts 69¢

**RATH'S
BLACKHAWK**

Famous For
Pine Pork

PORK LOINS

WHOLE OR HALF —
You Are Not Limited To End Cuts



Here's Really Fine
Pork With That
Luscious Neaty
Flavor That
Distinguishes
Genuine
Cora Fed
Pork.
Buy a
Whole or Half
and have it cut for you.
12-16 lb. Avg. Whole Loins 49¢ lb.

FRUITS and VEGETABLES..



SWEET
SPANISH
VERY MILD

ONIONS

3 LBS. FOR 10¢



THOMPSON SEEDLESS

GRAPES

LONG — FIRM
Cucumbers **3 FOR 10¢**

2 LBS. FOR 29¢

BOBS

The STORE WHERE Your DOLLAR BUYS MORE

SUPER MARKETS

2-ANAHEIM GAZETTE

ELECTED CHAIRMAN
John Mikitis, sales manager
for Kwikset Powdered Metal
Products of Anaheim, has been
elected chairman of the Western
Powdered Metal Fabricators, it
was announced today.

LEGAL NOTICES

(Pub. Anaheim Gazette July 14, 21,
28 and Aug. 4, 1960)

CERTIFICATE OF PARTNERSHIP
DOING BUSINESS UNDER
FICTITIOUS FIRM NAME

The undersigned do hereby certify
that they intend and propose to con-
duct and operate a business as
co-partners in the creation of a
shopping center which said shopping
center will cover an area of approxi-
mately one-quarter (1/4) acre at
the southeast corner of Orange-
ville and Nicholas Avenues, in the
City of Fullerton, County of Orange,
State of California, and in connection
with the operation of said shopping
center it is intended to advertise,
broadcast and create good will and
any other activity that will draw the
attention of the general public to said
shopping center, and to perform
any and all activities legally permit-
ted in building up good will for said
shopping center, that said partner-
ship is composed of the following per-
sons, whose names and places of resi-
dence are as follows:
WILL H. SIMON, 2115 Heather Road,
Beverly Hills, California
SAMUEL PIERRE, 1311 Sunset Blvd.,
Los Angeles 16, California
WITNESS our hands this 12th day
of June, 1960.
Wm. H. Simon
Samuel Pierre

STATE OF CALIFORNIA)
COUNTY OF LOS ANGELES)

On this 29th day of June, 1960,
before me, a Notary Public in and
for the said County and State, read-
ing therein, duly commissioned and
sworn, personally appeared Wm. H.
SIMON and SAMUEL PIERRE, known
to me to be the persons whose names
are subscribed to the within instru-
ment, and acknowledged to me that
they executed the same.
IN WITNESS WHEREOF, I have
hereunto set my hand and affixed
my official seal the day and year in
my certificate first above written.
Notary Public in and for said
County and State.

Samuel A. Miller, Attorney,
12111 Main Street, Bldg.
Los Angeles 14, California.

**HILGENFELD
MORTUARY**
Faithful, Courteous, Service
120 E. Broadway, Anaheim
PHONE KE 5-4105

**ANAHEIM TRUCK
& TRANSFER CO.**

Moving - Storage
General Trucking
PHONE KE 5-2865
505 S. Los Angeles St.
Anaheim



BACKS
CAMPBELL
KAULBARS
Mortuary

Phone KE 5-3209
251 N. Lemon

**HAMMOND
ORGANS**



THE SPINET

All model Hammond Organs
have the new, Touch-Response
Percussion Control; enjoy the
new added tones like chimps,
harp, xylophone, marimba, etc.
Your Old Piano Accepted
In Exchange

**DANZ - SCHMIDT
PIANO CO.**

529 No. Main St., Santa Ana
CI 2-5410
100 Piano to Choose From
OPEN-FRIDAY NIGHT

FOR CAREFREE HOLIDAYS
**START YOUR
 VACATION CLUB
 ACCOUNT-TODAY**
California Bank
 MEMBER FEDERAL DEPOSIT INSURANCE CORPORATION

Anaheim Office
 Center & Claudina Streets

Max B. Horn, Asst. Vice-President
 Barney W. Jordan, Manager

MERCURIO'S
 332 E. CENTER ST. • PH. KE5-3012

THUR. FRI. SAT. SPECIALS

COFFEE!!!

HILLS BROS. **79¢** BUTTER-NUT
 M.J.B. MAXWELL HOUSE
 IRIS CHASE & SANBORN

M.C.F. FROZEN — 6-OZ. CANS
LEMONADE 4 FOR 39¢

FRESH-LOCAL RANCH
EGGS 49¢ Med. "AA" doz. **55¢** Large "AA" doz.

PROGRESSO
TOMATO SAUCE 8-oz. can 5¢

FAR-FAME
TUNA 2 Cans for 45¢

WESSON
SALAD OIL Qts. 65¢

SHORTENING
SPRY 3-lb. can 75¢ **DURKEE'S "AA" OLEO 23¢**

HOLLY SUGAR 10-lb. bag 79¢

SCOT
TISSUE 10¢ **BLUE CHEER 65¢**

FRUITS AND VEGETABLES

U.S. NO. 1 WHITE ROSE
POTATOES 10 Lbs. for 29¢

CARROTS 2 bunches 15¢

FARGE SANTA ROSA
PLUMS 2 lbs. 25¢

OPEN EVERY NIGHT FOR YOUR CONVENIENCE

Daily 9 A.M. to 8 P.M.

ITALIAN *Food*
 SPAGHETTI 10-lb. box \$1.85
 Ronzoni Cut Macaroni 33c lb.
 Onorato Olive Oil Gal. tin \$2.95
 FRESH RICOTTA 1 lb. 49c
 MOZARELLA CHEESE 1 lb. 79c
 PROGRESSO Tomato Paste 9c
 Fresh ITALIAN SAUSAGE, lb. 79c

MEATS

U.S. GRADED — GOOD BEEF
ROUND STEAK 65¢

SIRLOIN
TIP STEAK 79¢

BONELESS ROLLED
BEEF ROASTS 63¢

RUMP ROASTS 63¢

CENTER CUTS
7-BONE ROASTS 39¢

FRESH SLICED
BABY BEEF LIVER 45¢

FRESH — LEAN
GROUND BEEF 3 lbs. 85¢

EXTRA LEAN
GROUND ROUND 59¢

FRESH — PAN READY
RED FRYERS 59¢

OSCAR MAYER'S CROWN
SLICED BACON 49¢

OSCAR MAYER'S
ALL-MEAT FRANKS 47¢

Sales tax added to all taxable items. We reserve the right to limit quantities. No sales to dealers.

Sunday 9 A.M. to 6 P.M.

CLASSIFIED
 TO START
 A WANT AD
 PHONE
 KE 5-2206
 CLASSIFIED
 INDEX

Did KE 5-2206 and just say
 "I want to place a want-ad."
 An ad taken before our Tues-
 day deadline of 1 p.m. will ap-
 pear in Thursday's paper.

CANCELLATIONS—
 Ad must be in paper be-
 fore it can be cancelled. Can-
 cellations must be made by 1
 p.m. Tuesday.

ERRORS—
 The Anaheim Gazette will not
 be responsible for more than
 one incorrect insertion of any
 advertisement and reserves
 the right to rectify all errors
 by a corrected insertion of the
 advertisement.

PERSONALS 1

LOST & FOUND 2

BUSINESS SERVICE 3

EMPLOYMENT 4

Real Estate 5

FINANCIAL 6

PETS—LIVESTOCK 7

ROOMS—BOARD 8

REAL ESTATE

Property For Sale

REAL BARGAINS IN CITRUS

5 A. lemons, a real steal, \$10,000.
 10 A. lemons, will pay a real big return on the
 investment. Per acre, \$3,000.
 10 A. oranges, has a real future, \$30,000.
 30 A. lemons, a good deal we feel at per acre,
 \$2,500.
 27 A. beautiful 4 bdrm. home on hill, balance
 in oranges and family fruit. All for only
 \$3,500 per acre.
 These and many more

FROSETH & SHERMAN

1412 West 6th St. — Phone 1721
 Corona

REAL ESTATE

Property For Sale

REAL ESTATE

a. Property for Sale
 b. Property for Rent
 c. Wanted—Buy or Rent

MERCHANDISE

a. Household Furniture
 b. Household Appliances
 c. Musical Instruments
 d. e. Musical Instruction
 f. Radio — TV Supplies,
 Repairs.

AUTOMOTIVE

a. Repairs
 b. Motorcycles
 c. Wanted to Buy
 d. Trailers
 e. Boats & Supplies
 f. Cars — Trucks — Trailers

BUSINESS SERVICE

Loma Vista

Endowment Care Provided
 Phone LAmbert 5-1575
 MEMORIAL PARK
 Fullerton, California
 Res. KEystone 5-3811

Ermsch

"My Cleaner"
 Main office 117 W. Cypress,
 Branch 350 W. Center
 Ke. 5-4615

BUSINESS SERVICE

RUGS CLEANED
 Alexander's Rug Co.
 11114 So. U.S. Hwy. 101
 Anaheim KE 5-3197

Frank Tausch

AGENCY
 Since 1919
 Auto — Fire — Liability Insurance
 Large Capital Stock Companies
 275 E. Center St. KE 5-3401

REAL ESTATE SCHOOL

IN SANTA ANA
 MEN & WOMEN prepare in spare
 time for unlimited opportunities
 in Real Estate New classes week-
 ly. Al Tyler instructing. Attend
 first evening free and learn
 about this great field. Call or
 write now for information. Busi-
 ness Institute, 1611 No. Broadway,
 Santa Ana, Calif. KI 2-4226, KI
 7-3511.

Hadley's

RESTAURANT
 A Good Place to Eat
 Daily 8:30 A.M. 'til 8 Except Sun-
 days 8:30 A.M. 'til 8:30 P.M.
 Corner Center & Los Angeles Sts

Hoffman's

In Anaheim Since 1925
 Better Shoe Repairing
 New Boots, Work Shoes and
 Work Oxfords for Men
 217 W. Center

FUCHSIAS — SHRUBS — TREES

Landscape Contractor
 Complete Nursery Service

Botts Nursery

1228 LINCOLN AVENUE
 Anaheim, Calif. KEystone 5-3450
 We Give a Redem Gold Bond Stamp

B 3—ANAHEIM GAZETTE

Business Service

ANNAHEIM

Matress Factory

Sterilizing—Official
 State Renovating Plant
 102 W. LA PALMA KE 5-2422

EMPLOYMENT

Help Wanted, Male

Men

PHONE JOBS

NOW!

Expansion in the tele-
 phone industry has
 created many openings
 in this area for:

INSTALLERS

LINEMEN

SPLICERS

FRAMEMEN

GENERAL REQUIREMENTS:

High school graduates
 under 28 years.
 Calif. Driver's License.
 No experience needed,
 but electrical or mechanical
 aptitude is desirable.

Apply —
 Mon. through Sat.
 from 8:30 A.M.
 514 1/2 N. Main Street
 Santa Ana, Rm. 217

PACIFIC TELEPHONE

Help Wanted, Female

GIRLS —

YOU —

will have an opportunity to ad-
 vance in our firm, because of our
 present expansion program.

The starting salary is good and
 you will receive frequent in-
 creases, too.

Jobs now for:

TELEPHONE OPERATORS

Apply —

114 So. Los Angeles St.
 Anaheim

9:00 to 4:00 P.M.

PACIFIC TELEPHONE

"Buy It Where It's Made"
 We not only make... but also
 especially mix...
PAINTS
 FOR ALL PURPOSES—
 Make it
 like new
 again
 with
PAINT
LUND and SONS Company
 1120 Lincoln Ave., Anaheim — Phone KE 5-2831

AT 10 A.M. * OPENS MONDAY, JULY 18 AT 10 A.M. * OPENS MONDAY, JULY 18 AT 10 A.M. * OPENS MONDAY, JULY 18 AT 10 A.M. * OPENS MONDAY, JULY 18 AT 10 A.M.

OPENS MONDAY JULY 18

Disneyland

WALT DISNEY'S
 MAGIC KINGDOM

The World's Most Fabulous Wonderland
 Comes to Life in Anaheim, California

Fun, thrills, fantasy, adventure
 await you in this exciting new
 world of Walt Disney's most fabu-
 lous dreams. Never before has so
 much sheer entertainment been
 brought out of the thrilling past
 ... out of the mystical future ...
 out of the mysterious unknown ...
 out of the enchanted land of sto-
 ries, tales and fables to entertain
 you as you have never before been
 entertained.

In this fascinating dream-world
 come-true you will find treasures
 you will prize for a lifetime, ex-
 periences you will relive for years
 to come. Until you see it for your-
 self, you'll never believe there
 exists such a wonderland of won-
 derful entertainment as awaits you
 at Disneyland.

LIVE TV PREVIEW
 Don't miss the coast-to-coast
 television preview of Disneyland,
 Walt Disney's Magic Kingdom, to
 be telecast live from Anaheim,
 Sunday, July 17, 4:30 P.M. to 6:00
 P.M. KABC-TV, Channel 7.

Entertainment Beyond Expectation!
 VISIT 160 ACRES OF HAPPINESS

ADMISSION
 ADULTS: \$1 including tax
 CHILDREN under 12: 50¢ tax free
 PARKING for 12,000 cars

OPEN 7 DAYS A WEEK
 10 A.M.—10 P.M.
 Restaurants for every
 taste and purse

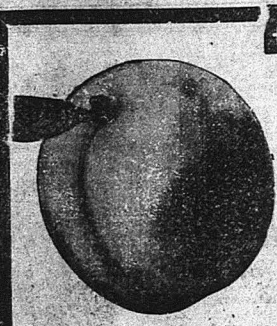
FRONTIERLAND ADVENTURELAND FANTASYLAND MAIN STREET TOMORROWLAND

OPENS MONDAY, JULY 18 AT 10 A.M. * OPENS MONDAY, JULY 18 AT 10 A.M. * OPENS MONDAY, JULY 18 AT 10 A.M. * OPENS MONDAY, JULY 18 AT 10 A.M. * OPENS MONDAY, JULY 18 AT 10 A.M.

SAVINGS LIKE THESE ARE REALLY WORTH THE RIDE!

4 EXPLOSIVE SALE DAYS • THURS. • FRI. • SAT. • SUN. — JULY 14, 15, 16, 17

All-American Does It Again! FOOD PRICES



fresh Fruits & Vegetables
EXTRA-FANCY
RIPE, SWEET
RED HAVEN PEACHES
Plump, Sweet and Meaty
— Hand Selected for
Prime Quality from the
Very Finest Variety!

CELERY
ORANGES

Extra-Fancy, Tender
Strictly-Fresh
LARGE STALKS, ea. . .

EXTRA-FANCY
SWEET
RIVERSIDE
VALENCIAS!

CRISCO
Pure Vegetable Shortening
3-LB. CAN **65¢**
THIS IS THE WEEK TO REALLY S-A-V-E!

LIPTON'S TEA

48-BAG PACKAGE **55¢**
CHICKEN OF THE SEA
GREEN LABEL CHUNK-STYLE

TUNA

NO. 1/2 FLAT CAN
PIC-FAIR WHOLE, SWEET
PICKLES

24-OZ. JAR **25¢**
BEANS

25¢
33¢

27¢



Delicatessen
Swift's Premium
FRANKS

1-LB. PKG. **45¢**

GENUINE KOSHER
DILLS
Large Jar **29¢**

MONTFREY
JACK CHEESE
SLICED LARGE-EYE
SWISS CHEESE

39¢
59¢

ANDRE'S LAGUNA
ROQUEFORT
DRESSING
Large Bottle **55¢**

CREAMY AGED
BLEU CHEESE
HOFFMAN ALL-BEEF
SALAMI

69¢
49¢

ALL-AMERICAN, RICHLY-MADE
POTATAO SALAD

1-LB. CTN. **29¢**



Van de Kamp's
SPECIALS
July 14, 15, 16



4-Layer Chocolate
BUTTERCREAM
SPONGE CAKE . . . **89¢**
(Reg. 99¢)

ALMOND TWIST
COFFEE CAKE . . . **27¢**
(Reg. 31¢)

Van de Kamp's
BAKERIES-COFFEE SHOPS
Norwalk, Garden Grove,
Newport Beach, Corona Del Mar

BUDGET SAVERS
Prices Effective Except Downey
FIESTA GAY STRIPED
TUMBLERS 6 For 69¢
FOR ICED TEA

WIN A FORD THUNDERBIRD
in New Ipana's L.A. Contest!
\$11,700 IN PRIZES
LESS OPPORTUNITIES
TO WIN A PRIZE
Come in—
get your Entry Blank here today!

Ipana

FROZEN FOODS
SUNKIST
LEMONADE
9 6-Oz. Cans \$1 2 12-Oz. Cans **39¢**

OCEAN DEEP
FISHSTICKS 4 10-Oz. Pkgs. **1**

4 FISHERMEN BREADED
FANTAIL SHRIMP 8-Oz. Pkg. **39¢**

CROSSE & BLACKWELL CONDENSED
SOUP 10 1/2-Oz. Cans
Clam Chowder **29¢** Cream of Lobster **35¢**

ARMOUR'S SALE!
Wonderful Items For Outings!

ARMOUR'S LUNCH MEAT
'TREET' 12-OZ. CAN **31¢**

ARMOUR'S CHOPPED
BEEF 12-OZ. CAN **29¢**

ARMOUR'S
TAMALES 2 16-Oz. Cans **35¢**

ARMOUR'S DEVILED
HAM 2 3 1/4-Oz. Cans **31¢**

ARMOUR'S VIENNA
SAUSAGE 2 4-Oz. Cans **31¢**

ARMOUR'S — 16-OZ. CAN
CORNEED BEEF HASH **27¢**

ARMOUR'S — WITH BEANS —
CHILI CON CARNE 16-Oz. Can **25¢**

BUTTERNUT COFFEE
All Grinds
1-Lb. Can **65¢**

All-American
MAY
24-Oz. F.
ALL-AMERICAN
SALAD DRESSING
IN 24-OUNCE FREEZER JAR

All-American
SANDWICHES
24-OZ. FREEZER JAR

JACK & B
PUR
PLU

No. 23
Can

ALL-AMERICAN

BUTTERNUT
COFFEE
69¢
All Grinds
1-Lb. Can

Pillsbury White, Choc. & Yellow
CAKE MIXES
51¢
Lge. Pkgs.

All-American Pure, Fresh
OLEO
225¢
1-Lb. Pkgs.

All-American Pure, Real
MAY'NAISE **39¢**
4-Oz. Freezer Jar
ALL-AMERICAN FRESH
SALAD DRESSING **35¢**
24-OUNCE FREEZER JAR
AMERICAN
SANDWICH SPREAD **39¢**
OZ. FREEZER JAR

PROCTOR & GAMBLE'S
GIANT SIZE
TIDE
59¢

M
7¢

IT

JACK & BEANSTALK
PURPLE
PLUMS
23¢
No. 2 1/2 Can

DEL MONTE EARLY GARDEN
NO. 303 CAN
PEAS **19¢**
LANGENDORF SUGAR WAFER
10-OZ. PKG.
COOKIES **39¢**

Sand Dollar SALE!
Buy 'em Any Dollar Combination!
S & W - 12-OZ. CANS
PINEAPPLE JCE. 10 For \$1
S & W - 12-OZ. CANS
TOMATO JCE. 10 For \$1
S & W - 12-OZ. CANS - VEGETABLE
JCE. COCKTAIL 10 For \$1
S & W - 12-OZ. CANS
GRAPEFRUIT JCE. 10 For \$1
S & W - 12-OZ. CANS - APRICOT
NECTAR 10 For \$1
S & W - NO. 303 CANS - SECTIONS OF
GRAPEFRUIT 4 For \$1
S & W - 24-OZ. BOTTLES
LIQUID APPLE 4 For \$1
S & W - 24-OZ. BOTTLES
PRUNE JCE. 4 For \$1
S & W - FANCY
GRAPEFRUIT JCE.
OR S & W FANCY
BLENDED JCE.
JUMBO 46-OZ. CANS
Your Choice!
3 For \$1

ED!

MRS. ANITA LEE OF GARDEN GROVE ...
One of Our Customers Wins A Dodge 4-Door Coronet in the Armour 'Name the Star' National Contest!
Presentation to be Made at All-American Garden Grove Friday at 4:30!
Miss Anita Lee, MGM Star has been invited & may be here!



FRESH (NOT FROZEN)
Fancy, Colored Frying
CHICKEN
BREASTS, THIGHS,
OR DRUMSTICKS

69¢
lb

You buy ONLY the tender meaty portions YOU prefer! Last time we offered them at THIS price, we sold over 2 TONS! - YOUR CHOICE

Luer's Hickory-Smoked Boneless
PORK COTTAGE **59¢**
ROLL
Excellent Sliced Whole or in Sandwiches!

All-American's Famous Fresh, Lean
GROUND BEEF **29¢**
lb

VEAL SALE!

U.S. Grade 'Choice' or 'Good', Northern
VEAL ROAST **29¢**
lb
Best Cuts - 7-Bone & Chuck!

U.S. Grade 'Choice' or 'Good' O-Bone
VEAL ROAST **39¢**
lb

U.S. Grade 'Choice' or 'Good' Veal
RIB STEAKS **49¢**
lb

U.S. Grade 'Choice' or 'Good' Veal
CLUB STEAKS **59¢**
lb
Freshly-Ground Veal & Pork
LOAF MIX **29¢**
lb

Wilson Certified First Quality Eastern
SLICED BACON **59¢**
Free Davy Crockett Button with each 1-lb. pkg.



DOWNY
CORNER FIRESTONE & DOLAN
DAILY 'TIL MIDNITE, 9 A.M. TO 10 P.M. SUN.
GARDEN GROVE
9000 Garden Grove Blvd. (Garden Sq.) 3049
DAILY 9:00 A.M. TO 10:00 P.M.
NORWALK
CORNER FIRESTONE & PIONEER
OPEN DAILY 'TIL MIDNITE
CORONA DEL MAR
3049 COAST HIGHWAY AT JASMINI
DAILY 9:00 A.M. TO 10:00 P.M.
NEWPORT BEACH
2600 COAST HIGHWAY AT TUSTIN
OPEN 9:00 A.M. TO 10:00 P.M. DAILY
SAN CLEMENTE
402 EL CAMINO REAL
9 A.M. TO 3 P.M. SUNDAY 9 TO 3 P.M.

UTTERNUT
COFFEE
69¢

Pillsbury White, Choc. & Yellow
CAKE

MIXES
51¢
Lge. Pkgs.

All-American Pure, Fresh

OLEO
225¢
1-Lb. Pkgs.

MRS. ANITA LEE OF GARDEN GROVE...



One of Our Customers Wins A Dodge 4-Door Coronet in the Armour 'Name the Star' National Contest!

Presentation to be Made at All-American Garden Grove Friday at 4:30! Miss Anita Lee, MGM Star has been invited & may be here!

All-American Pure, Real

MAY'NAISE **39¢**

4-Oz. Freezer Jar

ALL-AMERICAN FRESH

AD DRESSING **35¢**

ICE FREEZER JAR

ADWICH SPREAD **39¢**

FREEZER JAR

PROCTOR & GAMBLE'S
GIANT SIZE

TIDE
59¢

and 7 DOLLAR SALE!

Buy 'em Any Dollar Combination!

S & W - 12-OZ. CANS

PINEAPPLE JCE. 10 For \$1

S & W - 12-OZ. CANS

TOMATO JCE. 10 For \$1

S & W - 12-OZ. CANS - VEGETABLE

JCE. COCKTAIL 10 For \$1

S & W - 12-OZ. CANS

GRAPEFR'T JCE. 10 For \$1

S & W - 12-OZ. CANS - APRICOT

NECTAR 10 For \$1

S & W - NO. 303 CANS - SECTIONS OF

GRAPEFRUIT 4 For \$1

S & W - 24-OZ. BOTTLES

LIQUID APPLE 4 For \$1

S & W - 24-OZ. BOTTLES

PRUNE JCE. 4 For \$1

S & W - FANCY

GRAPEFRUIT JCE.

OR S & W FANCY

BLENDED JCE.

JUMBO 46-OZ. CANS

Your Choice!

3 For \$1

FRESH (NOT FROZEN)

Fancy, Colored Frying

CHICKEN

BREASTS, THIGHS,

OR DRUMSTICKS

You buy ONLY the tender meaty portions YOU prefer! Last time we offered them at THIS price, we sold over 2

TONS! - YOUR CHOICE

69¢

Luer's Hickory-Smoked Boneless

PORK COTTAGE

ROLL

59¢

All-American's Famous Fresh, Lean

GROUND BEEF **29¢**

VEAL SALE!

U.S. Grade 'Choice' or 'Good', Northern

VEAL ROAST **29¢**

Best Cuts - 7-Bone & Chuck!

U.S. Grade 'Choice' or 'Good' O-Bone

VEAL ROAST **39¢**

U.S. Grade 'Choice' or 'Good' Veal

RIB STEAKS **49¢**

U.S. Grade 'Choice' or 'Good' Veal

CLUB STEAKS **59¢**

Freshly-Ground Veal & Pork

LOAF MIX **29¢**

Wilson Certified First Quality Eastern

SLICED BACON **59¢**

Free Davy Crockett Button with each 1-lb. pkg.

JACK & BEANSTALK

PURPLE

PLUMS

23¢

No. 2 1/2 Can

DEL MONTE EARLY GARDEN

PEAS

NO. 303 CAN

19¢

LANGENDORF SUGAR WAFER

COOKIES

10-OZ. PKG.

39¢

ALL-AMERICAN

We Sincerely Hope To Limit No Sales To Patients!

● **DOWNEY**
CORNER FIRESTONE & DOLAN
DAILY 'TIL MIDNITE, 9 A.M. TO 10 P.M. SUN.

● **NORWALK**
CORNER FIRESTONE & PIONEER
OPEN DAILY 'TIL MIDNITE

● **NEWPORT BEACH**
2600 COAST HIGHWAY AT TUSTIN
OPEN 9:00 A.M. TO 10:00 P.M. DAILY

● **GARDEN GROVE**
9000 Garden Grove Blvd. (Garden Sq.)
DAILY 9:00 A.M. TO 10:00 P.M.

● **CORONA DEL MAR**
3049 COAST HIGHWAY AT JASMINI
DAILY 9:00 A.M. TO 10:00 P.M.

● **SAN CLEMENTE**
402 EL CAMINO REAL
9 A.M. TO 5 P.M. SUNDAY 9 TO 5 P.M.

EMPLOYMENT

Male Wanted, Female
HOUSEKEEPER for elderly gentleman. Live in. Light work. L.A. 4-1047.

CALL KEYSTONE 5-2206
FOR GAZETTE WANT ADS

MERCHANDISE

LIVING ROOM FURNITURE
LIVING ROOM OUTFIT—German tables, coffee table, Never Mar. Brocade and it's Beautiful. Step 2 beautiful lamps. Rather give you than bank. Own \$143.17. Pay \$12 a wk. Stored at I.C.C. Warehouse, 12133 Front St. Norwalk. Block south Firestone Blvd. Phone TO 4-2797. Warehouse man there nights & Sundays too.

PETS - LIVESTOCK

Wanted
We buy livestock and custom slaughter. Bridgford Packing Co., Anaheim, Calif.

MERCHANDISE

Household Furniture
FURNITURE—4 Rooms. We paid \$1371 for it but our House Financing failed so you can buy for \$597.99 cash or mo. pymts of \$24.56. New 53 Oketec & Merritt range. Westinghouse refrigerator. Bedroom, 2 lamps, bookcase headboard, Mr. and Mrs. Dresser, footboard, mattress, box spring, 5 Pc. Living Room, chair and divan in fringe, 2 step tables, coffee table, 2 lamps. Chrome Set, 5 Pc. It pays to look. See H at I.C.C. Warehouse, 12133 Front St. Norwalk. Block south Firestone Blvd. Phone TO 4-2797. Warehouse man on duty nights & Sundays too.

MERCHANDISE

Household Furniture
CRIBS, bassinets, toys, wheels, strollers, baby carriages. Everything for the tiny tot. Lowest Prices.
Millikan Baby Furn.
404 S. Spadra LA 5-1236
Fullerton
BRAND NEW Living Room Set, Sofa Bed Divan & Chair all factory guaranteed. It's only been stored. Pd. dn. to \$127 cash or pay the pymts of 7.70 per mo. See Baughn's 415 E. Center St. Anaheim, KEystone 5-5566. Daily 9-9, Sunday 11-5.
4 Rooms Furniture. Includes 9 pc. living room group, end range, 5 pc. dining group, complete bed room group. Pd. dn. to \$294.71. Cash or pay the pymts of \$3.40 per week. See Baughn's A & S Warehouse Sales, 220 S. Main St. Santa Ana, 6 blocks south of 4th St. Open evenings 'til 9, Sun. 11-5. Phone Kimberly 3-7201.

MERCHANDISE

Household Appliances
1955 Philco Refrigerator. Latest cross top freezer chest with nice veg. & meat chiller tray, space for bottles, butter. Used only 1 mo. Pd. dn. to \$136.89. No cash needed just pay the pymts of \$9.19 per mo. See Baughn's A & S Warehouse Sales, 220 S. Main St. Santa Ana, 6 blocks south of 4th St. Open evenings 'til 9, Sun. 11-5. Phone Kimberly 3-7201.
1955 Norgie Automatic Washer. Does everything. Has big tub, agitator, & overflow rinse, & Time Line control. Used only 2 months. Pd. dn. to \$168.77. No cash needed just pay the pymts of \$9.19 per mo. See Baughn's A & S Warehouse Sales, 220 S. Main St. Santa Ana, 6 blocks south of 4th St. Open evenings 'til 9, Sun. 11-5. Phone Kimberly 3-7201.

MERCHANDISE

Household Appliances
1955 Philco Refrig. The latest cross top freezer chest model with space for bottles, butter, also nice Veg. & Meat chiller. It's brand new but pd. dn. to \$185.00. No dn. pymt. If you pay the pymts of \$4.44 per month. See Baughn's 415 E. Center St. Anaheim, KEystone 5-5566. Daily 9-9, Sunday 11-5.
CALL KEYSTONE 5-2206 FOR GAZETTE WANT ADS

MERCHANDISE

Household Appliances
1955 Philco Refrigerator the big deluxe freezer Refrigerator combination, automatic defrosting, dairy bar shelves in door, color interior, large vegetable crisper, big giant freezer chest. It's new but pd. dn. to \$276.66. No dn. pymt. Just pay the pymts of \$14.33 per month. See Baughn's 415 E. Center St. Anaheim, KEystone 5-5566. Daily 9-9, Sunday 11-5.
REFRIGERATOR 1955 Norgie. Large 10.5 cu. ft. with automatic defrost. Just push the button. Has a cross top frozen food locker that stores 60 lbs. Vegetable crispers with quick chiller drawer. Shelves in door. I am looking. My bal. is \$108.76, my equity free. No cash needed. Just take the payments of \$9.86 per mo. See anytime day or evening. 1441 W. Chapman in Orange. KELlogg 8-5817.

MERCHANDISE

Household Appliances
FREEZER—Philco. Sold for \$880. Deluxe, sharp freeze in every shelf. Shelves in Door. Used 2 mo. Not a scratch. Take it for what owed; only \$249. Pay \$24 a week. It's at I.C.C. Warehouse, 12133 Front St. Norwalk. Block south Firestone Blvd. Phone TO 4-2797. Warehouse man on duty nights & Sundays too.
4 ROOMS FURNITURE. Includes Bookcase Headboard Mattress & Box Spring Hollywood frame, Mr. and Mrs. Dresser with Mirror, 9 piece living room group. Gas Range, 5 piece dining group, only been stored. Pd. dn. to \$298.00 cash or pay the pymts of \$3.20 per month. See Baughn's, 415 E. Center St. Anaheim, KEystone 5-5566. Daily 9-9, Sunday 11-5.

MERCHANDISE

Musical Instruments
Steinway Grand. Gorgeous in every way. Parlor size. This wonderful instrument at a big saving. Many other Grands, Mason & Hamlin, Knabe, Story & Clark, etc. Prices \$495 & up. Dan-Schmidt Piano, 520 N. Main, Santa Ana. 100 pianos. Hammond Organ. Slightly used. Good big saving. Another wonderful buy. Hammond Chord Organ. Little used. The Organ everyone can play. Dan-Schmidt Piano Co., 520 N. Main, Santa Ana.
Musical Instructions
Accordian Instruction
Piano Instruction
at your home by experienced teacher.
Popular and Classical
Accordions loaned to beginners
ZACHARY HOWITT
Lambert 5-8685
Radio-TV—Supplies—Repair
Ballman's
TELEVISION AND APPLIANCE SERVICE
122 W. Broadway
Phone KEystone 5-5703
Prompt 1-day Television Service
Also auto radio and radios.
Baker's Anaheim
150 W. Center St. KE 5-3931
Open Mondays and Fridays
'til 9 P.M.
Miscellaneous
DESKS, Files, Typewriters, New and Used. Economy. 309 E. 3rd. Santa Ana, Ki 7-3118.
DUO-THERM OIL HEATER, medium size. Very reasonable. Also Cabinet Size Wood heater. No reasonable offer refused. Both in excellent condition. Call "Andy".
—KEystone 5-2206—9 a.m. to noon before Sat.
SAVE ON USED STEEL
Steel plates, angles, beams, wire, used machinery at bargain prices. Orange Steel Products. 411 W. Walnut. Kellogg 8-6880
SPORTS EQUIPMENT
Prestel Rogers & Prestel
117 S. Clementine
KE 5-4206
Wanted to Buy
WANTED 50 USED PIANOS for our big rental dept. Highest cash allowance for trade. Or—Cash—\$2500.00 or—Grand piano. Dan-Schmidt, 520 N. Main, Santa Ana.
AUTOMOTIVE
Auto Repair
MOTOR OVERHAUL
6 Cyls. ————— \$48.00
8 Cyls. ————— \$58.00
Includes both labor and parts. New rings, wrist pins, valve grind, fittings of main and rod bearings. Expert motor tune up. 90-day or 4,000 mile guarantee.
REBUILT ENGINES
—Up to 15 MONTHS TO PAY—
Built in our own factory by skilled mechanics. Don't contend with the middle man. Buy direct
REBUILT ENGINES
SHORT BLOCK INSTALLED
FORD ————— \$129.50
CHEVROLET ————— \$149.50
PLYM & DODGE ————— \$155.00
CHRYSLER & DE SOTO ————— \$170.00
STUDEBAKER ————— \$170.00
OLDS & PONTIAC ————— \$170.00
BUICK ————— \$175.00
PACARD 6 ————— \$175.00
Hudson ————— \$175.00
Loan Car ————— Free Towing
Open daily 7:30 to 6 P.M.
Call or Phone in Santa, at 310 E. THIRD ST.
Ph. Kimberly 3-8254
Block must meet our standards
Plus taxes, gaskets and oil
Open Sunday 10 to 2
BELLES ENGINE REBUILDERS
State Bonded

OPENING SALE

JULY 15

BEDROOM COMPLETE

Bookcase headboard, Mr. & Mrs. Chest with mirror, mattress & box spring combination. Just been in storage. Paid down to \$119.40. Cash or pay the payments of \$5.75 per month.

119⁴⁰

4 ROOMS FURNITURE

Gas range, living room—consisting of sofa bed divan, matching chair, two end tables, two lamps & cocktail table. Complete bedroom—bookcase headboard, Mr. & Mrs. chest with mirror, mattress & box spring combination, 5 pc. dining group. Has just been in storage but paid down to \$298.00. Cash or pay the payments of \$14.90 per month.

298⁰⁰

LIVING ROOM COMPLETE

Sofa bed divan with matching chair, 2 end tables, cocktail table and two lamps. In storage only, but paid down to \$129.15. Cash or pay the payments of \$6.50 per month.

129¹⁵

MR. & MRS. CHEST with Bookcase Headboard

Was \$109.95 NOW **\$69⁹⁵**

HEADBOARD-FRAMES Mattress and Box Spring

Was \$89.95 NOW **\$49⁹⁵**

MAPLE HEADBOARD, CHEST, Hollywood Bed Frame

Was \$259.95 NOW **\$189⁹⁵**

Sealy Mattress and Box Spring.

Was \$79.95 Now **\$49⁹⁵**

Combination Mattress and Box Spring.

Was \$69.95 Now **\$39⁹⁵**

FREEZERS

1955 INTERNATIONAL HARVESTER Big 15 1/2 Cu. Ft. with all color interior. Sharp Freezer. Holds over 600 lbs. It's brand new. \$144.00 to \$248.00 from \$70.00. Cash or pay the pymts. of \$11.65 per Mo.

249⁰⁰

18 Cu. Ft. Brand New **298⁸⁹**

55 PHILCO REFRIGERATOR

Nice cross top freezer chest, dairy bar, shelves in door. Paid down to \$194.15 while stored. No cash down if you pay the payments of \$10.00 per month.

194¹⁵

AUTOMATIC WASHER

1955 General Electric Automatic Washer. The Filter Flow Action Model, Big Tub, Agitator, Water Saver. Everything. It's been paid down to \$238.48 from \$300.00. No down pymt. If you pay the pymts. of \$12.81 per mo.

238⁴⁸

CURVED SECTIONAL

Was \$419.95 NOW **\$279⁰⁰**

2 Piece Sectional

Was \$189.95 NOW **\$115⁰⁰**

2 Piece Sofa Bed Divan and Chair

Was \$169.95—NOW **\$95⁰⁰**

2 Piece, Foam Rubber Divan and Chair

Was \$319 NOW **\$199⁰⁰**

2 Piece Divan and Chair

Was \$239 NOW **\$179⁰⁰**

Hide-A-Bed Divan

Was \$219.95 NOW **\$129⁹⁵**

CARVING SET

\$49.95 Value While They Last **\$9⁹⁵**

COCKTAIL TABLES

19.95 VALUE **11⁹⁵**

Matching Step End Table

11.95 EACH **29⁹⁵**

OR 3 FOR **29⁹⁵**

Occasional CHAIRS

REG. 69.95 **\$39⁹⁵**

1955 GAFFERS RANGE & SATTLE

Nice CP all automatic, griddle in middle, grill broiler. Been stored but paid down to \$148.51. No down payment if you pay the payments of \$4.49 per month.

148⁵¹

BAUGHN'S

415 E. CENTER ST. - ANAHEIM

OPEN DAILY 9 to 9; SATURDAY 9 to 6; SUNDAY 11 to 5 — PHONE KEYSTONE 5-5566

BALLMAN'S

July Television CLEARANCE SALE!

We're Overstocked

Will cut GROUP NO. 1 to \$19⁹⁵
Consoles and Table Models
All in good condition

GROUP NO. 2 \$49⁹⁵
cut to

GROUP NO. 3 \$59⁹⁵
now priced

Reconditioned & Guaranteed
REFRIGERATORS
Special Group of
20 at \$39.50

BALLMAN'S

TELEVISION AND APPLIANCE SERVICE

122 W. Broadway
Phone KEystone 5-5703
Prompt 1-day Television Service
Also auto radio and radios.
Baker's Anaheim
150 W. Center St. KE 5-3931
Open Mondays and Fridays
'til 9 P.M.
Miscellaneous
DESKS, Files, Typewriters, New and Used. Economy. 309 E. 3rd. Santa Ana, Ki 7-3118.
DUO-THERM OIL HEATER, medium size. Very reasonable. Also Cabinet Size Wood heater. No reasonable offer refused. Both in excellent condition. Call "Andy".
—KEystone 5-2206—9 a.m. to noon before Sat.
SAVE ON USED STEEL
Steel plates, angles, beams, wire, used machinery at bargain prices. Orange Steel Products. 411 W. Walnut. Kellogg 8-6880
SPORTS EQUIPMENT
Prestel Rogers & Prestel
117 S. Clementine
KE 5-4206
Wanted to Buy
WANTED 50 USED PIANOS for our big rental dept. Highest cash allowance for trade. Or—Cash—\$2500.00 or—Grand piano. Dan-Schmidt, 520 N. Main, Santa Ana.
AUTOMOTIVE
Auto Repair
MOTOR OVERHAUL
6 Cyls. ————— \$48.00
8 Cyls. ————— \$58.00
Includes both labor and parts. New rings, wrist pins, valve grind, fittings of main and rod bearings. Expert motor tune up. 90-day or 4,000 mile guarantee.
REBUILT ENGINES
—Up to 15 MONTHS TO PAY—
Built in our own factory by skilled mechanics. Don't contend with the middle man. Buy direct
REBUILT ENGINES
SHORT BLOCK INSTALLED
FORD ————— \$129.50
CHEVROLET ————— \$149.50
PLYM & DODGE ————— \$155.00
CHRYSLER & DE SOTO ————— \$170.00
STUDEBAKER ————— \$170.00
OLDS & PONTIAC ————— \$170.00
BUICK ————— \$175.00
PACARD 6 ————— \$175.00
Hudson ————— \$175.00
Loan Car ————— Free Towing
Open daily 7:30 to 6 P.M.
Call or Phone in Santa, at 310 E. THIRD ST.
Ph. Kimberly 3-8254
Block must meet our standards
Plus taxes, gaskets and oil
Open Sunday 10 to 2
BELLES ENGINE REBUILDERS
State Bonded

WASHER

1955 Norgie Automatic Washer. The big tub model with Agitator overflow rinse; used only 2 weeks. Pd. dn. to \$238.48 from original \$300.00. No cash dn. If you pay the pymts of \$11.75 per mo. See Baughn's 415 E. Center St. Anaheim, KEystone 5-5566. Daily 9-9, Sunday 11-5.

REFRIGERATOR—Philco famous Dairy Bar, Deluxe 35 model.

Very large freezer compartment. Adjustable shelves. Porcelain crisper and all latest features. Repossessed. Orig. Cost \$329.95. Bal. due \$187. Take over Bk. of Am. pymts of \$23.77 a week. Looks brand new. Stored at I.C.C. Warehouse, 12133 Front St. Norwalk. Block south Firestone Blvd. Phone TO 4-2797. Warehouse man on duty nights & Sundays too.

FREEZER, KELVINATOR 18 cu. ft. Brand new holds over 500 lbs. of food. It needs no bolting down. Just push the button. Washes, rinses and overflows rinses and spins dry. I used it only 2 months. You can have it just for the balance due on it \$132.00. No cash needed. Just take over the payments of \$8.50 per mo. My equity free. See anytime day or evening. 1441 W. Chapman, KELlogg 8-5817. FREEZER, KELVINATOR 18 cu. ft. Brand new holds over 500 lbs. of food. It needs no bolting down. Just push the button. Washes, rinses and overflows rinses and spins dry. I used it only 2 months. You can have it just for the balance due on it \$132.00. No cash needed. Just take over the payments of \$8.50 per mo. My equity free. See anytime day or evening. 1441 W. Chapman, KELlogg 8-5817.

WASHER

1955 Norgie Automatic Washer. The big tub model with Agitator overflow rinse; used only 2 weeks. Pd. dn. to \$238.48 from original \$300.00. No cash dn. If you pay the pymts of \$11.75 per mo. See Baughn's 415 E. Center St. Anaheim, KEystone 5-5566. Daily 9-9, Sunday 11-5.

REFRIGERATOR—Philco famous Dairy Bar, Deluxe 35 model.

Very large freezer compartment. Adjustable shelves. Porcelain crisper and all latest features. Repossessed. Orig. Cost \$329.95. Bal. due \$187. Take over Bk. of Am. pymts of \$23.77 a week. Looks brand new. Stored at I.C.C. Warehouse, 12133 Front St. Norwalk. Block south Firestone Blvd. Phone TO 4-2797. Warehouse man on duty nights & Sundays too.

FREEZER, KELVINATOR 18 cu. ft. Brand new holds over 500 lbs. of food. It needs no bolting down. Just push the button. Washes, rinses and overflows rinses and spins dry. I used it only 2 months. You can have it just for the balance due on it \$132.00. No cash needed. Just take over the payments of \$8.50 per mo. My equity free. See anytime day or evening. 1441 W. Chapman, KELlogg 8-5817. FREEZER, KELVINATOR 18 cu. ft. Brand new holds over 500 lbs. of food. It needs no bolting down. Just push the button. Washes, rinses and overflows rinses and spins dry. I used it only 2 months. You can have it just for the balance due on it \$132.00. No cash needed. Just take over the payments of \$8.50 per mo. My equity free. See anytime day or evening. 1441 W. Chapman, KELlogg 8-5817.

CADILLAC TRADE-INS

1954 Cadillac '60' Special Sedan

Beautiful 2-tone finish. Car has only 13,000 actual miles. Full power equipment. One owner car.

1954 Cadillac '62' Convert. Cpe.

Actual miles on speedometer. Full power. Beautiful all red leather interior. Local one owner car.

1953 Cadillac Coupe DeVille

2-tone paint. Traded in by original owner. A car you would be proud to own.

PHIL RENICK CADILLAC

FULLERTON, CALIFORNIA
613 701 So. Spadra Rd.
Phone Lam. 5-2347

AUTOMOTIVE

Trucks

33 FT. SPARTAN Royal Monaco
house trailer, 10' x 16', din-
ette, awnings \$3850. Lemon,
420 W. 1st St. Torin.

Auto Repair

PAUL'S RADIATOR REPAIR
301 S. Los Angeles Street
KE 5-5897

Cars—Trucks—Trailers

AUTOMOTIVE

Auto Repair

One Day Service
RADIATORS — GAS TANKS
Repairing — Cleaning — Replacing

Anaheim Radiator

REPAIR CO.
252 N. Los Angeles St. KE 5-2259
(Near S. Corner of Broadway)

Cars—Trucks—Trailers

AUTOMOTIVE

Cars—Trucks—Trailers

WEEK END SPECIALS

1953 Chev. Bel Air Hardtop . . . 1595.00

Radio, Heater, Powerglide

1953 Chev. 4-dr. Sedan . . . 1295.00

210

1951 Olds Club Cpe. Super 88 . . . 1095.00

1951 Pontiac 8 4-dr. Sedan . . . 895.00

1950 Pontiac 4-dr. Sedan . . . 695.00

1946 Chev. 4-dr. Sedan . . . 195.00

CROWELL MOTOR CO.

"Your Local Oldsmobile Dealer"

252 No. Los Angeles — Ph. KE 5-5746

STEFFY'S SPECIALS

1954 Ford Vic. Coupe . . . \$1995.00

R & H, O'D., Sharp

1953 Buick Sedan 4-dr. . . . \$1495.00

Radio, Heater, Dyna.

1954 Pontiac Ch. Delux Sed. \$1895.00

R & H, Hydra., 4-way Seat

1949 Nash 600 Sedan . . . \$195.00

Radio, Heater, O'D.

1946 Mercury Sedan . . . \$195.00

Radio, Heater

WE HAVE 40 MORE FIRST LINE CARS TO CHOOSE

FROM. COME IN, WE WILL MAKE AN OUT-

STANDING DEAL.

STEFFY BUICK CO.

410 SO. LOS ANGELES ST. — ANAHEIM

KEYSTONE 5-2297

Bill Bartlett Nash

Factory Authorized

SALES - PARTS - SERVICE

For all Your Needs

210 S. LOS ANGELES

ANAHEIM — KE 5-2197

HIGHEST CASH

PAID

For your used car.

We need all makes

and models. See us

before you sell.

Orange Co. Motors

1201 N. Palm, Anaheim

Phone KE 5-3191

Certified

Used Cars

Bargain Prices

at the

BARGAIN CENTER

'50 Stude Champ.

4-dr. Sedan: O'drive trans.

Heater

\$445

'50 Stude Pickup

1/2 ton. O'drive trans. Very

good condition

\$595

'51 Stude

Land Cruiser

O'drive trans. Radio

\$745

'49 Ford Sedan

O'drive trans. Radio, Heater

\$365

Many Others

See Our Stock

LEAVITT

FORD

STUDEBAKER DEALER

226 S. Los Angeles St., Anaheim

Phone KE 5-2236

AUTOMOTIVE

Cars—Trucks—Trailers

WEEK END SPECIALS

1953 Chev. Bel Air Hardtop . . . 1595.00

Radio, Heater, Powerglide

1953 Chev. 4-dr. Sedan . . . 1295.00

210

1951 Olds Club Cpe. Super 88 . . . 1095.00

1951 Pontiac 8 4-dr. Sedan . . . 895.00

1950 Pontiac 4-dr. Sedan . . . 695.00

1946 Chev. 4-dr. Sedan . . . 195.00

CROWELL MOTOR CO.

"Your Local Oldsmobile Dealer"

252 No. Los Angeles — Ph. KE 5-5746

STEFFY'S SPECIALS

1954 Ford Vic. Coupe . . . \$1995.00

R & H, O'D., Sharp

1953 Buick Sedan 4-dr. . . . \$1495.00

Radio, Heater, Dyna.

1954 Pontiac Ch. Delux Sed. \$1895.00

R & H, Hydra., 4-way Seat

1949 Nash 600 Sedan . . . \$195.00

Radio, Heater, O'D.

1946 Mercury Sedan . . . \$195.00

Radio, Heater

WE HAVE 40 MORE FIRST LINE CARS TO CHOOSE

FROM. COME IN, WE WILL MAKE AN OUT-

STANDING DEAL.

STEFFY BUICK CO.

410 SO. LOS ANGELES ST. — ANAHEIM

KEYSTONE 5-2297

Bill Bartlett Nash

Factory Authorized

SALES - PARTS - SERVICE

For all Your Needs

210 S. LOS ANGELES

ANAHEIM — KE 5-2197

HIGHEST CASH

PAID

For your used car.

We need all makes

and models. See us

before you sell.

Orange Co. Motors

1201 N. Palm, Anaheim

Phone KE 5-3191

Certified

Used Cars

Bargain Prices

at the

BARGAIN CENTER

'50 Stude Champ.

4-dr. Sedan: O'drive trans.

Heater

\$445

'50 Stude Pickup

1/2 ton. O'drive trans. Very

good condition

\$595

'51 Stude

Land Cruiser

O'drive trans. Radio

\$745

'49 Ford Sedan

O'drive trans. Radio, Heater

\$365

Many Others

See Our Stock

LEAVITT

FORD

STUDEBAKER DEALER

226 S. Los Angeles St., Anaheim

Phone KE 5-2236

AUTOMOTIVE

Cars—Trucks—Trailers

WEEK END SPECIALS

1953 Chev. Bel Air Hardtop . . . 1595.00

Radio, Heater, Powerglide

1953 Chev. 4-dr. Sedan . . . 1295.00

210

1951 Olds Club Cpe. Super 88 . . . 1095.00

1951 Pontiac 8 4-dr. Sedan . . . 895.00

1950 Pontiac 4-dr. Sedan . . . 695.00

1946 Chev. 4-dr. Sedan . . . 195.00

CROWELL MOTOR CO.

"Your Local Oldsmobile Dealer"

252 No. Los Angeles — Ph. KE 5-5746

STEFFY'S SPECIALS

1954 Ford Vic. Coupe . . . \$1995.00

R & H, O'D., Sharp

1953 Buick Sedan 4-dr. . . . \$1495.00

Radio, Heater, Dyna.

1954 Pontiac Ch. Delux Sed. \$1895.00

R & H, Hydra., 4-way Seat

1949 Nash 600 Sedan . . . \$195.00

Radio, Heater, O'D.

1946 Mercury Sedan . . . \$195.00

Radio, Heater

WE HAVE 40 MORE FIRST LINE CARS TO CHOOSE

FROM. COME IN, WE WILL MAKE AN OUT-

STANDING DEAL.

STEFFY BUICK CO.

410 SO. LOS ANGELES ST. — ANAHEIM

KEYSTONE 5-2297

Bill Bartlett Nash

Factory Authorized

SALES - PARTS - SERVICE

For all Your Needs

210 S. LOS ANGELES

ANAHEIM — KE 5-2197

HIGHEST CASH

PAID

For your used car.

We need all makes

and models. See us

before you sell.

Orange Co. Motors

1201 N. Palm, Anaheim

Phone KE 5-3191

Certified

Used Cars

Bargain Prices

at the

BARGAIN CENTER

'50 Stude Champ.

4-dr. Sedan: O'drive trans.

Heater

\$445

'50 Stude Pickup

1/2 ton. O'drive trans. Very

good condition

\$595

'51 Stude

Land Cruiser

O'drive trans. Radio

\$745

'49 Ford Sedan

O'drive trans. Radio, Heater

\$365

Many Others

See Our Stock

LEAVITT

FORD

STUDEBAKER DEALER

226 S. Los Angeles St., Anaheim

Phone KE 5-2236

AUTOMOTIVE

Cars—Trucks—Trailers

WEEK END SPECIALS

1953 Chev. Bel Air Hardtop . . . 1595.00

Radio, Heater, Powerglide

1953 Chev. 4-dr. Sedan . . . 1295.00

210

1951 Olds Club Cpe. Super 88 . . . 1095.00

1951 Pontiac 8 4-dr. Sedan . . . 895.00

1950 Pontiac 4-dr. Sedan . . . 695.00

1946 Chev. 4-dr. Sedan . . . 195.00

CROWELL MOTOR CO.

"Your Local Oldsmobile Dealer"

252 No. Los Angeles — Ph. KE 5-5746

STEFFY'S SPECIALS

1954 Ford Vic. Coupe . . . \$1995.00

R & H, O'D., Sharp

1953 Buick Sedan 4-dr. . . . \$1495.00

Radio, Heater, Dyna.

1954 Pontiac Ch. Delux Sed. \$1895.00

R & H, Hydra., 4-way Seat

1949 Nash 600 Sedan . . . \$195.00

Radio, Heater, O'D.

1946 Mercury Sedan . . . \$195.00

Radio, Heater

WE HAVE 40 MORE FIRST LINE CARS TO CHOOSE

FROM. COME IN, WE WILL MAKE AN OUT-

STANDING DEAL.

STEFFY BUICK CO.

410 SO. LOS ANGELES ST. — ANAHEIM

KEYSTONE 5-2297

Bill Bartlett Nash

Factory Authorized

SALES - PARTS - SERVICE

For all Your Needs

210 S. LOS ANGELES

ANAHEIM — KE 5-2197

HIGHEST CASH

PAID

For your used car.



Disneyland Inc.

1313 HARBOR BLVD., ANAHEIM, CALIF. • TELEPHONE: KEYSTONE 8-1181

July 11, 1955

TO OUR FRIENDS AND NEIGHBORS

In only a matter of days now, Disneyland will open its gates to the world and a new Orange County tradition will be born.

As this event draws near, I am very mindful of another famous Orange County tradition ... friendliness ... the friendliness you have shown us with your thoughtfulness, cooperation and confidence during the building of Disneyland.

To all of you, may we at Disneyland express a sincere and warm "Thank you."

As your new friends and neighbors, we are proud indeed to become a part of the Orange County tradition.

WALT DISNEY